



esko

EXTENDED
PRODUCT CATALOG

WHEN RELIABILITY MATTERS

esko PACIFIC SALES

EXTENDED PRODUCT CATALOG

INTERACTIVE TABLE OF CONTENTS

- > [FLOW METERS and ROTAMETERS](#)
- > [SEAL WATER MONITORING](#)
- > [OIL LUBRICATION MONITORING](#)
- > [OVAL GEAR METERS](#)
- > [OPTICAL SHEET and FELT GUIDE](#)
- > [GREASE LUBRICATION \(ASSALUB\)](#)

FLOW METERS FOR LIQUIDS & GASES

INDUSTRIAL METERING SOLUTIONS

- FLOW METERS FOR DEMANDING APPLICATIONS
- ROBUST CONSTRUCTION IN A VARIETY OF MATERIALS
- FUNCTIONAL OPTIONS:
 - > CONSTANT FLOW REGULATORS
 - > MULTI-TUBE MODELS
 - > PRESSURE GAUGES
 - > CUSTOM SCALES
 - > ALARM OPTIONS



EFR14



ELD



ELO



ELF



ELX



EMO



EHI



EB

PREMIUM PRODUCTS

LOW FLOWS



MEDIUM FLOWS



HIGH FLOWS

COST EFFECTIVE IN-LINE FLOW METERS with PVC PROCESS CONNECTIONS

- FOR APPLICATIONS IN:
 - > PROCESS INDUSTRIES
 - > WATER TREATMENT PLANTS
 - > FLOW MONITORING OF LIQUIDS AND GASES
- EASY MAINTENANCE
- SPECIAL MATERIALS FOR HIGH TEMPERATURES AND CORROSIVE CHEMICALS



ECC



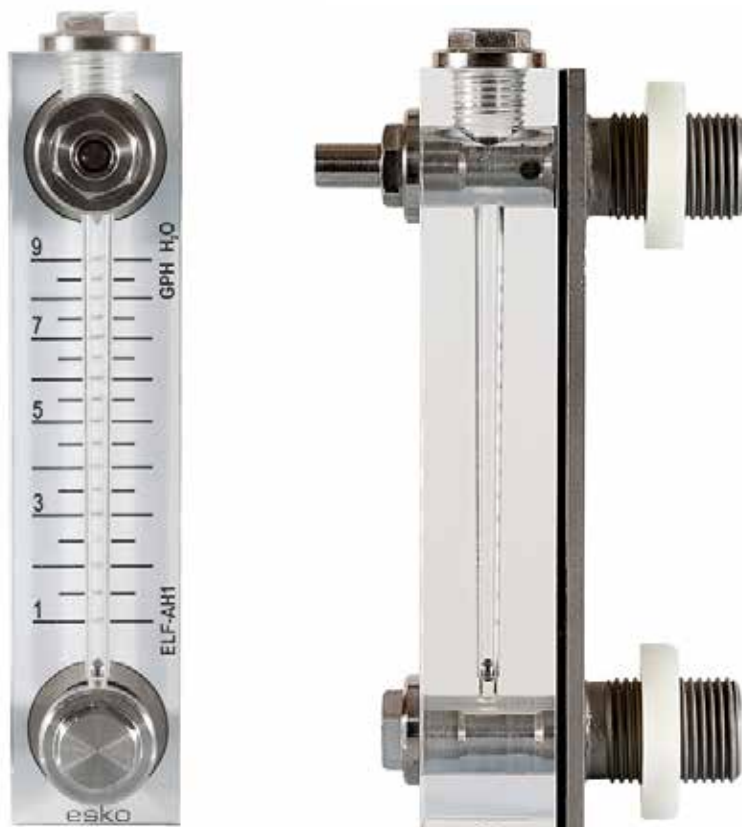
EHC



EBC

ELF FLOW METER

www.eskopacific.com
ELF DATASHEET



Compact flow meter for measurement of small flows of liquids or gases.

Easy to change from one flow range to another by swapping out float and scale.

APPLICATIONS

- Bubble tube level
- Density measurement
- Pressurized instrument enclosures
- Flow measurement

FEATURES

- Solid construction, reliable operation
- North American standard size parts
- Tube and O-ring material options
- Corrosion and heat resistance

ELF FLOW METER

SPECIFICATIONS

| MODEL | ELF-A | ELF-T | ELF-G |
|----------------------|-----------------------------------|-----------------------------------|-----------------------------------|
| BODY MATERIAL | ACRYLIC | TROGAMID® | GRILAMID® |
| Best for | Typical applications | Corrosion and freeze resistance | Heat resistance |
| Metallic parts | SS316 | SS316 | SS316 |
| O-ring seals | Nitrile (optional Viton® or EPDM) | Nitrile (optional Viton® or EPDM) | Nitrile (optional Viton® or EPDM) |
| Maximum temperature | 167°F / 75°C @ 290 psi | 158°F / 70°C | 176°F / 80°C |
| Maximum pressure | 440 psi @ 85°F (30°C) | 440 psi @ 85°F (30°C) | 440 psi @ 85°F (30°C) |
| Connections | ¼" NPT | ¼" NPT | ¼" NPT |
| Weight | 0.75 lb (0.34 kg) | 0.60 lb (0.30 kg) | 0.60 lb (0.30 kg) |

| | |
|----------------------|---|
| Build options | Body material, O-ring material, handknob, calibration for non-standard liquids or gases |
| Optional accessories | Pair any ELF meter with constant flow regulator model EFR3 |

FLOW METER

ELF

BODY MATERIAL

Acrylic **A**
Grilamid® **G**
Trogamid® **T**

FLOW RANGE

WATER

| GPH | LPM | SCFH | NLPM | |
|------|------|------|------|----------|
| 0.35 | 0.02 | 2.5 | 1.3 | A |
| 0.6 | 0.04 | 3.5 | 1.8 | B |
| 1.0 | 0.06 | 5.5 | 2.6 | C |
| 1.5 | 0.10 | 8.5 | 4 | D |
| 2.2 | 0.14 | 14 | 6 | E |
| 4 | 0.25 | 18 | 9 | F |
| 6 | 0.4 | 28 | 12 | G |
| 9 | 0.55 | 40 | 18 | H |
| 12 | 0.8 | 60 | 30 | I |
| 20 | 1.2 | 100 | 45 | J |
| 40 | 2.5 | 120 | 60 | K |

AIR

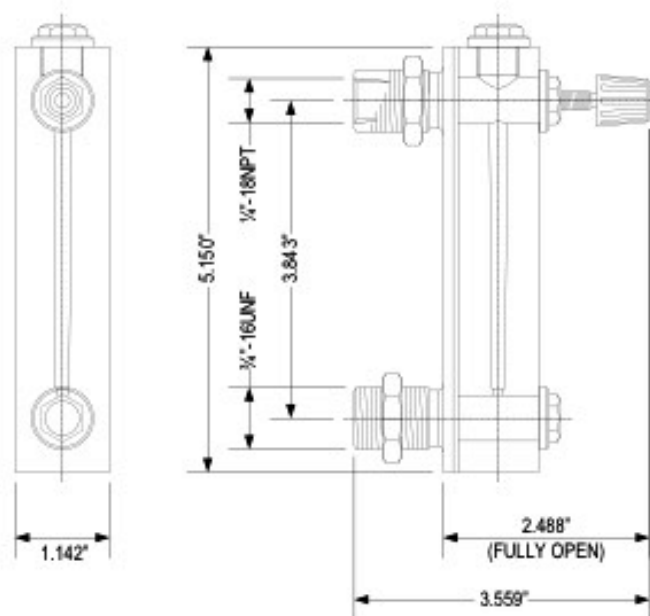
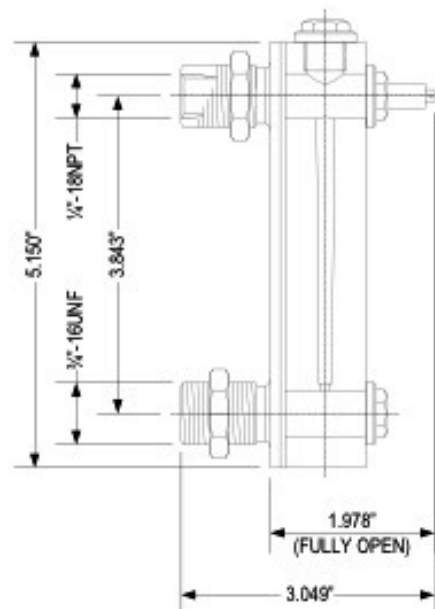
| SCFH | NLPM | |
|------|------|----------|
| 2.5 | 1.3 | A |
| 3.5 | 1.8 | B |
| 5.5 | 2.6 | C |
| 8.5 | 4 | D |
| 14 | 6 | E |
| 18 | 9 | F |
| 28 | 12 | G |
| 40 | 18 | H |
| 60 | 30 | I |
| 100 | 45 | J |
| 120 | 60 | K |

SCALE

| | |
|-----------------------------|----------|
| Water GPH | 1 |
| Air SCFH (14.7 psia @ 68°F) | 2 |
| Dual Scale GPH / SCFH | 3 |
| Water LPM | 4 |
| Air NLPM (101.3 kPa @ 20°C) | 5 |
| Dual Scale LPM / NLPM | 6 |
| Percent Scale 10-100% | 7 |
| CC per Min | 8 |
| Relative Scale (1-10) | R |

OPTIONS

| | |
|-------------------------|----------|
| Constant flow regulator | C |
| EPDM O-ring seals | E |
| Hand adjusting knob | H |
| Viton® O-ring seals | V |



HOW TO SPECIFY MODEL NUMBER, an EXAMPLE:

ELF meter for water flow up to 9 GPH, with handknob:

1. Select body material **A** for acrylic **ELF-A**
2. Specify range **H** up to 9 GPH **ELF-AH**
3. Choose scale type **1** for water **ELF-AH1**
4. Add option **H** for handknob **ELF-AH1-H**

SPECIAL MATERIALS AND SCALES use order code ELF-X

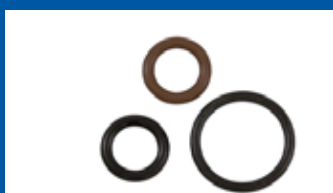
Custom materials, scales and scale markings are available.

A unique manufacturing number will be assigned at the time of production (eg. ELF-E9345)

Contact us for details.



BODY MATERIALS



O-RING SEALS



HAND KNOB



CONSTANT FLOW REGULATOR

EM FLOW METER

www.eskopacific.com
EM DATASHEET



INDUSTRIAL flow meter

For reliable measurement and monitoring of medium sized flows of liquids and gases.

APPLICATIONS

- Sealing and cooling water measurement
- Lubrication oil measurement
- Mixing of gases

FEATURES

- Solid construction, impact resistant flow tube
- With or without flow control valve
- Alarm ready
- Easy to install & maintain
- Large selection of flow ranges

EM FLOW METER

SPECIFICATIONS

| MODEL | EM-A | EM-D | EM-S |
|-----------------------|---|-------------------------------------|-------------------------------------|
| BODY MATERIAL | ALUMINUM | DELRIN® (POM) | SS316 |
| Metering tube | Grilamid® TR 55 or Polysulphone PSU | Grilamid® TR 55 or Polysulphone PSU | Grilamid® TR 55 or Polysulphone PSU |
| Float material(s) | SS316 / Delrin® | SS316 / Delrin® | SS316 / Delrin® |
| O-ring seals | Nitrile (Viton® or EPDM optional) | Nitrile (Viton® or EPDM optional) | Nitrile (Viton® or EPDM optional) |
| Maximum pressure | 440 psi | 290 psi | 440 psi |
| Maximum temperature | | | |
| Grilamid® tube | 176°F / 80°C | 176°F / 80°C | 176°F / 80°C |
| Polysulphone PSU tube | 248°F / 120°C | 248°F / 120°C | 248°F / 120°C |
| Connections | 1/2" NPT | 1/2" NPT | 1/2" NPT |
| Weight | 1.7 lb (0.75 kg) | 2.1 lb (0.95 kg) | 4.4 lb (2.0 kg) |
| Build options | Removable flow marker included, calibration for non-standard liquids & gases | | |
| Optional accessories | Inductive adjustable alarm, pressure gauge (with optional red set pointer), pair with constant flow regulator model EFR14 | | |

FLOW METER

EM

| | | |
|--------------------|---------------|----------|
| END BLOCK MATERIAL | Aluminum | A |
| | Delrin® (POM) | D |
| | Kynar® (PVDF) | K |
| | SS316 | S |

| FLOW RANGE | WATER | | AIR | | |
|------------|-------|-----|------|------|----------|
| | GPM | LPM | SCFM | NLPM | |
| 0.55 | 2 | | 3 | 75 | A |
| 0.9 | 3.25 | | 5 | 130 | B |
| 1.4 | 5.5 | | 7 | 180 | C |
| 2.4 | 9 | | 11 | 280 | D |
| 2.6 | 10 | | 12 | 325 | E |
| 4.5 | 17 | | 20 | 500 | F |
| 6 | 22 | | 26 | 650 | G |
| 8 | 30 | | 35 | 900 | H |

| | | |
|-------|-----------------------------|----------|
| SCALE | Water GPM | 1 |
| | Air SCFM (14.7 psia @ 68°F) | 2 |
| | Dual Scale GPM / SCFM | 3 |
| | Water LPM | 4 |
| | Air NLPM (101.3 kPa @ 20°C) | 5 |
| | Dual Scale LPM / NLPM | 6 |
| | Relative Scale (1-10) | R |

| | | |
|---------|---------------------|----------|
| OPTIONS | PES/PSU flow tube | P |
| | Viton® O-ring seals | V |
| | EPDM O-ring seals | E |

HOW TO SPECIFY MODEL NUMBER, an EXAMPLE:

EM meter for water flow, built with SS end blocks and Viton® O-ring seals:

1. Select **S** end block material SS316 **EM-S**
2. Specify flow range **B** 0.9 GPM **EM-SB**
3. Choose scale type **1** for water **EM-SB1**
4. Add build option **V** Viton® O-rings **EM-SB1-V**

SPECIAL ORDER CONSTRUCTION use order code EM-EXXXX

A unique manufacturing number will be assigned at the time of production (eg. EMO-E7345)
Contact us for details.



BODY MATERIALS



PRESSURE GAUGE



ALARM



FLOW TUBE

EH SERIES FLOW METERS

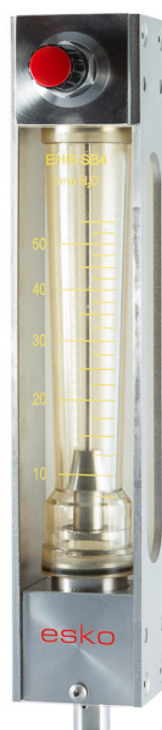
www.eskopacific.com
EH SERIES DATASHEET



EH
NO VALVE



EHO
VALVE ON OUTLET



EHR
VALVE ON OUTLET and
QUICK CHANGE TUBE

For medium range flows
of liquids and gases.

A large, clear scale
ensures quick and
accurate measurement
reading.

APPLICATIONS

- Sealing and cooling water measurement
- Lubrication oil measurement
- Mixing of gases

FEATURES

- Built-in control valve
- Sturdy construction, impact resistant tube
- Large selection of flow ranges and materials
- Alarm ready
- Easy to install, clean and maintain

EH SERIES FLOW METERS

SPECIFICATIONS

| MODEL | EH-A | EH-D | EH-S |
|-----------------------|-------------------------------------|-------------------------------------|-------------------------------------|
| BODY MATERIAL | ALUMINUM | DELRIN®(POM) | SS316 |
| Metering tube | Grilamid® TR 55 or Polysulphone PSU | Grilamid® TR 55 or Polysulphone PSU | Grilamid® TR 55 or Polysulphone PSU |
| Float material | SS316 | SS316 | SS316 |
| O-ring seals | Nitrile (optional Viton® or EPDM) | Nitrile (optional Viton® or EPDM) | Nitrile (optional Viton® or EPDM) |
| Maximum pressure | 440 psi | 290 psi | 440 psi |
| Maximum temperature | | | |
| Grilamid® tube | 176°F / 80°C | 176°F / 80°C | 176°F / 80°C |
| Polysulphone PSU tube | 248°F / 120°C | 248°F / 120°C | 248°F / 120°C |
| Connections | 1" NPT | 1" NPT | 1" NPT |
| Weight | 4.2 lb (1.9 kg) | 3.1 lb (1.4 kg) | 6.8 lb (3.1 kg) |

Build options Tube material, O-ring seals, threads, calibration for non-standard liquids & gases, PVDF end blocks, pressure gauge (with optional red set pointer) for EHI models

Optional accessories Adjustable alarm sensor

FLOW METER

EH

NO FLOW CONTROL VALVE

VALVE ON INLET (see EHI datasheet)

VALVE ON OUTLET

VALVE ON OUTLET & QUICK CHANGE TUBE

I

O

R

END BLOCK MATERIAL Aluminum
Delrin® (POM)
Kynar® (PVDF)
SS316

A

D

K

S

FLOW RANGE

WATER

| GPM | LPM | SCFM | NLPM |
|-----|-----|------|------|
| 11 | 40 | 45 | 1200 |
| 15 | 55 | 60 | 1600 |
| 17 | 65 | 70 | 1800 |
| 22 | 85 | 100 | 2600 |
| - | - | - | - |
| 30 | 120 | - | - |

AIR

A

B

C

D

E

F

SCALE

Water GPM
Air SCFM (14.7 psia @ 68°F)
Dual Scale GPM / SCFM
Water LPM
Air NLPM (101.3 kPa @ 20°C)
Dual Scale LPM / NLPM
Relative Scale (1-10)

1

2

3

4

5

6

R

OPTIONS

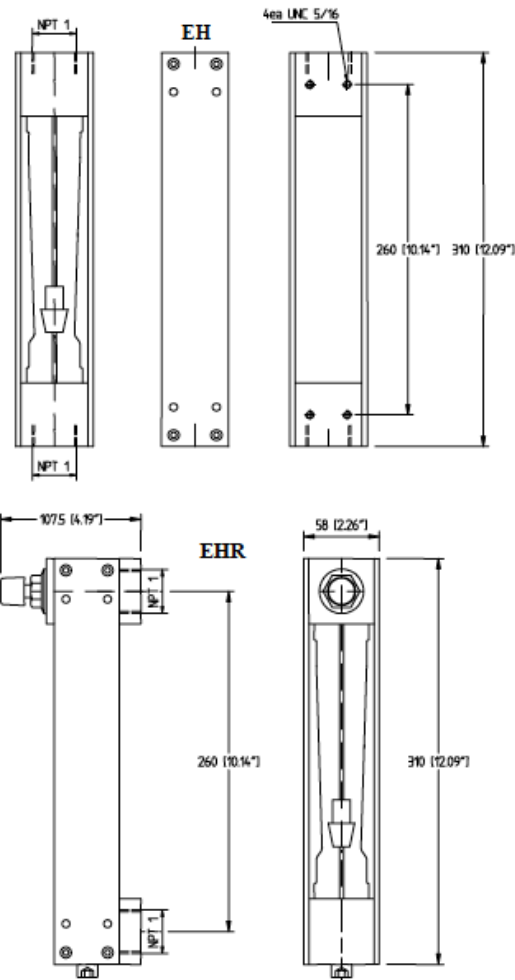
Alarm readiness
PES/PSU flow tube
Viton® O-ring seals
EPDM O-ring seals

A

P

V

E



HOW TO SPECIFY MODEL NUMBER, an EXAMPLE:

EH meter for air flow built with Delrin® end blocks, comes with Viton® O-rings:

1. Select end block material **D** for Delrin® (POM)
2. Specify flow range **D** up to 85 SCFM
3. Choose scale type **2** for air
4. Add option **V** for Viton® O-rings

EH-D

EH-DD

EH-DD2

EH-DD2-V

SPECIAL ORDER CONSTRUCTION use order code EH-EXXXX

A unique manufacturing number will be assigned at the time of production (eg. EHR-E7345)

Contact us for details.



BODY MATERIALS



PRESSURE GAUGE



ALARM



QUICK CHANGE TUBE

EB FLOW METER

www.eskopacific.com
EB DATASHEET



Variable area flow meter
for large flows of water
and air.

Where great mechanical
strength is essential.

APPLICATIONS

- Water treatment plants
- Sealing and cooling water measurement
- Flush water applications
- Lubrication oil for large gear boxes
- Compressed air measurement

FEATURES

- Solid construction, impact resistant flow tube
- Large selection of flow ranges
- Threaded or flanged connections
- Alarm capable
- Easy to install and maintain

SPECIFICATIONS

| MODEL | EB-A | EB-S | EBF-S |
|-----------------------|--|-----------------------------------|-----------------------------------|
| BODY MATERIAL | ALUMINUM | SS316 | SS316 FLANGE |
| Metering tube | Grilamid® TR 55 or PES | Grilamid® TR 55 or PES | Grilamid® TR 55 or PES |
| Float material | SS316 | SS316 | SS316 |
| O-ring seals | Nitrile (optional Viton® or EPDM) | Nitrile (optional Viton® or EPDM) | Nitrile (optional Viton® or EPDM) |
| Maximum pressure | 290 psi | 290 psi | 290 psi |
| Maximum temperature | | | |
| Grilamid® tube | 176°F / 80°C | 176°F / 80°C | 176°F / 80°C |
| Polysulphone PSU tube | 248°F / 120°C | 248°F / 120°C | 248°F / 120°C |
| Connections | 2" NPT | 2" NPT | ANSI 2" 150 lb flange |
| Weight | 7.3 lb (3.3 kg) | 9.9 lb (4.5 kg) | 14.6 lb (6.6 kg) |
| Build options | Special materials for high temperature and corrosive media, calibration for non-standard liquids and gases | | |
| Optional accessories | Adjustable alarm sensor | | |

FLOW METER

EB

CONNECTION TYPE

2" FNPT threaded connection
ANSI 2" 150 lb flange (SS316 only)

F

END BLOCK MATERIAL Aluminum
SS316

A

S

FLOW RANGE

WATER

AIR

| GPM | LPM | SCFM | NLPM | |
|------|-----|------|-------|----------|
| 15 | 55 | 70 | 1900 | A |
| 27.5 | 105 | 120 | 3000 | B |
| 40 | 150 | 160 | 4250 | C |
| 52.5 | 200 | 220 | 6000 | D |
| 90 | 320 | 380 | 10000 | E |
| 110 | 400 | 450 | 12000 | F |
| 130 | 500 | - | - | G |

SCALE

Water GPM
Air SCFM (14.7 psia @ 68°F)
Water LPM
Air NLPM (101.3 kPa @ 20°C)
Relative Scale (1-10)

1

2

4

5

R

OPTIONS

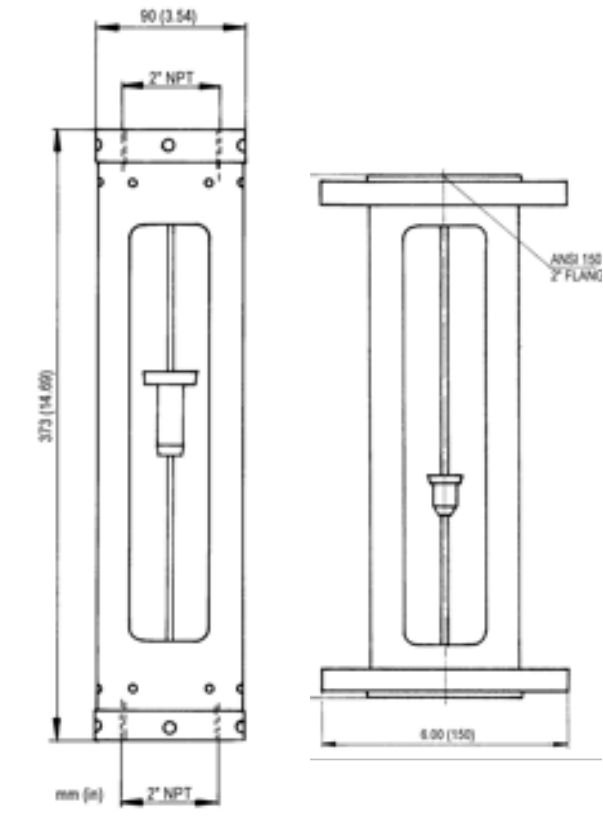
Alarm readiness
PES/PSU flow tube
Viton® O-ring seals
EPDM O-ring seals

A

P

V

E



HOW TO SPECIFY MODEL NUMBER, an EXAMPLE:

EB meter for water flow built with SS316 end blocks, comes with Viton® O-rings:

- Select meter type **EB** for 2" FNPT connections
 - Select end block material **S** for SS316 end blocks
 - Specify flow range **C** up to 40 GPM
 - Choose scale type **1** for water
 - Add build option **V** for Viton® O-rings
- EB-SC1-V**

SPECIAL ORDER CONSTRUCTION use order code EB-XXXX

A unique manufacturing number will be assigned at the time of production (eg. EB-E3749)
Contact us for details.



BODY MATERIAL



FLANGE



ALARM



O-RINGS

ELC PURGE FLOW METER

www.eskopacific.com
ELC DATASHEET



A new alternative for monitoring air and water purge flows or low flows of liquids or gases.

Based on the popular ELF model design.

APPLICATIONS

- Water and air purging
- Bubble tube level or density measurement
- Pressurized instrument enclosures
- Flow measurement

FEATURES

- Clear easy to read scale
- Available in selection of flow ranges
- Backout proof adjustment valve can be on inlet or outlet
- North American standard size parts

ELC PURGE FLOW METER

SPECIFICATIONS

| MODEL | ELC-A |
|----------------------|--|
| BODY MATERIAL | ACRYLIC |
| Valve assembly | POM |
| O-ring seals | Nitrile (Viton® optional) |
| Maximum pressure | 145 psi 68°F (20°C) |
| Maximum temperature | 122°F / 50°C @ 30 psi |
| Fittings | Delrin® (PVC optional) |
| Connections | 1/4" NPT |
| Weight | 0.26 lb (0.12 kg) |
| Build options | A selection of flow ranges, backout proof flow adjustment valve on inlet or outlet, O-ring material, custom scales and calibration |

FLOW METER

ELC
A

BODY MATERIAL

Acrylic

FLOW RANGE

WATER

| GPH | LPM | SCFH | NLPM | |
|------|------|------|------|----------|
| 0.35 | 0.02 | 2.5 | 1.3 | A |
| 0.6 | 0.04 | 3.5 | 1.8 | B |
| 1 | 0.06 | 5.5 | 2.6 | C |
| 1.5 | 0.1 | 8.5 | 4 | D |
| 2.2 | 0.14 | 14 | 6 | E |
| 4 | 0.25 | 18 | 9 | F |
| 6 | 0.4 | 28 | 12 | G |
| 9 | 0.55 | 40 | 18 | H |
| 12 | 0.8 | 60 | 30 | I |
| 20 | 1.2 | 100 | 45 | J |
| 40 | 2.5 | 120 | 60 | K |

AIR

| SCFH | NLPM | |
|------|------|----------|
| 2.5 | 1.3 | A |
| 3.5 | 1.8 | B |
| 5.5 | 2.6 | C |
| 8.5 | 4 | D |
| 14 | 6 | E |
| 18 | 9 | F |
| 28 | 12 | G |
| 40 | 18 | H |
| 60 | 30 | I |
| 100 | 45 | J |
| 120 | 60 | K |

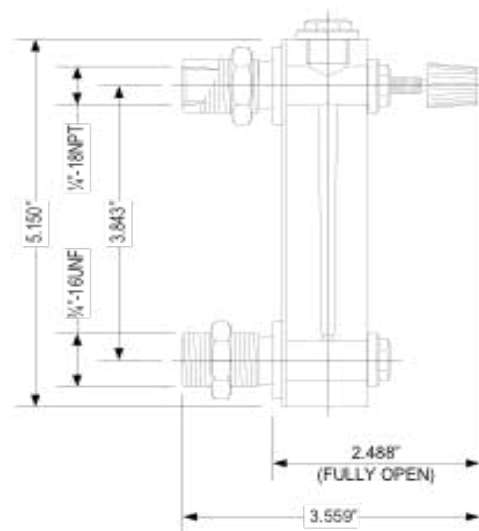
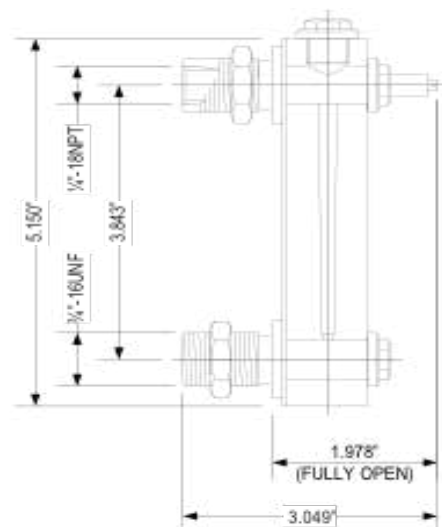
SCALE

| | |
|-----------------------------|----------|
| Water GPH | 1 |
| Air SCFH (14.7 psia @ 70°F) | 2 |
| Dual Scale GPH / SCFH | 3 |
| Water LPM | 4 |
| Air NLPM (101.3 kPa @ 20°C) | 5 |
| Dual scale LPM / NLPM | 6 |
| Percent scale 10-100% | 7 |
| Relative scale (1-10) | R |

OPTIONS

| | |
|--------------|----------|
| PVC fittings | T |
| Long body | L |

09/2018



HOW TO SPECIFY MODEL NUMBER, an EXAMPLE:

ELC meter for water flow, with PVC fittings:

1. Select meter type **ELC** (acrylic tube is standard)
2. Specify flow range **H** up to 9 GPH water
3. Choose scale type **1** for water
4. Add build option **T** for PVC fittings

ELC-A
ELC-AH
ELC-AH1
ELC-AH1-T

SPECIAL ORDER CONSTRUCTION

Custom scales and scale markings are available. For custom flow meters use order code ELC-X.

A unique manufacturing number will be assigned at the time of production (eg. ELC-E8845) Contact us for details.



FLOW VALVE



FITTINGS



O-RINGS



CUSTOM SCALES

ECC FLOW METER

www.eskopacific.com
ECC DATASHEET



Cost effective and reliable measuring and monitoring of medium sized flows.

For liquids and gases in process industries.

APPLICATIONS

- Process industry
- Chemical industry
- Water treatment plants
- General liquid and gas measurement

FEATURES

- Low cost
- Good corrosion resistance
- Easy maintenance and mounting
- Socket type or threaded

ECC FLOW METER

SPECIFICATIONS

| MODEL | ECC |
|---------------------|--|
| METERING TUBE | GRILAMID® TR 55 or POLYSULPHONE PSU |
| Adapter | PVC (optional CPVC, steel) |
| Float material(s) | SS316 / Delrin® |
| O-ring seals | Nitrile (optional Viton® or EPDM) |
| Maximum pressure | 145 psi 68°F (20°C) |
| Maximum temperature | 122°F / 50°C @ 29 psi |
| Connections | 1/2" NPT or socket |
| Weight | 0.3 lb (0.12 kg) |
| Build options | Flow tube material, O-ring seals, threads, calibration for non-standard liquids and gases. |

FLOW METER **ECC**

| FLOW RANGE | WATER | | AIR | | |
|------------|-------|-----|------|------|---|
| | GPM | LPM | SCFM | NLPM | |
| 0.5 | 2 | | 2.75 | 70 | A |
| 0.9 | 3.25 | | 5 | 130 | B |
| 1.4 | 5 | | 6.5 | 180 | C |
| 2.2 | 8 | | 10 | 280 | D |
| 2.6 | 10 | | 12 | 300 | E |
| 4.5 | 17 | | 20 | 500 | F |
| 5.5 | 22 | | 24 | 650 | G |
| 8 | 30 | | 35 | 900 | H |

| | | |
|-------|-----------------------------|---|
| SCALE | Water GPM | 1 |
| | Air SCFM (14.7 psia @ 68°F) | 2 |
| | Dual Scale GPM / SCFM | 3 |
| | Water LPM | 4 |
| | Air NLPM (101.3 kPa @ 20°C) | 5 |
| | Dual Scale LPM / NLPM | 6 |
| | Relative Scale (1-10) | R |

| | | |
|---------|---------------------|---|
| OPTIONS | PES/PSU flow tube | P |
| | Socket type | S |
| | Viton® O-ring seals | V |
| | EPDM O-ring seals | E |
| | CPVC end connectors | C |

HOW TO SPECIFY (For example ECC-D1-P)

1. Select connection size (ECC for 1/2")
2. Select flow range/scale (D1 for 2.2 GPM water)
3. Selection options (P for PES flow tube)

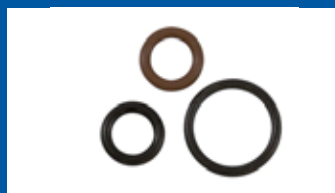
SPECIAL ORDER CONSTRUCTION

For custom flow meters use order code ECC-EXXX.

A unique manufacturing number will be assigned at the time of production (eg. ECC-EAC34) Contact us for details.



FLOW TUBE



O-RINGS



ADAPTER



CONNECTIONS

EHC FLOW METER

www.eskopacific.com
EHC DATASHEET



FOR LARGE FLOWS

Reliable measuring and monitoring of high flows.

For liquids and gases in process industries.

APPLICATIONS

- Process industry
- Chemical industry
- Water treatment plants
- General liquid and gas measurement

FEATURES

- Low cost
- Good corrosion resistance
- Easy maintenance and mounting
- Socket type or threaded

EHC FLOW METER

SPECIFICATIONS

| MODEL | EHC |
|---------------------|---|
| METERING TUBE | GRILAMID® TR 55 or POLYSULPHONE PSU |
| Adapter | PVC (Optional CPVC, Kynar® or steel) |
| Float | AISI 304 / 316 |
| O-ring seals | Nitrile (optional Viton® or EPDM) |
| Maximum pressure | 145 psi 68°F (20°C) |
| Maximum temperature | 122°F / 50°C @ 30 psi |
| Connections | 3/4 " NPT or socket |
| Weight | 0.6 lb (0.28 kg) |
| Build options | Flow tube, O-ring seals, thread, calibration for non-standard liquids and gases |

FLOW METER EHC

09/2018

| FLOW RANGE | WATER | | AIR | | |
|------------|-------|-----|------|------|---|
| | GPM | LPM | SCFM | NLPM | |
| | 11 | 44 | 47.5 | 1200 | A |
| | 15 | 55 | 60 | 1700 | B |
| | 16 | 60 | 65 | 1800 | C |
| | 20 | 80 | 80 | 2200 | D |

| | | |
|-------|-----------------------------|---|
| SCALE | Water GPM | 1 |
| | Air SCFM (14.7 psia @ 68°F) | 2 |
| | Dual Scale GPM / SCFM | 3 |
| | Water LPM | 4 |
| | Air NLPM (101.3 kPa @ 20°C) | 5 |
| | Dual Scale LPM / NLPM | 6 |
| | Relative Scale (1-10) | R |

| | | |
|---------|---------------------|---|
| OPTIONS | PES/PSU flow tube | P |
| | Socket type | S |
| | Viton® O-ring seals | V |
| | EPDM O-ring seals | E |
| | CPVC end connectors | C |

HOW TO SPECIFY (For example EHC-A1-P)

1. Select connection size (EHC for 1/2")
2. Select flow range/scale (D1 for 2.2 GPM water)
3. Selection options (P for PES flow tube)

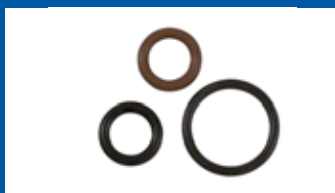
SPECIAL ORDER CONSTRUCTION

For custom flow meters use order code EHC-EXXX.

A unique manufacturing number will be assigned at the time of production (eg. EHC-EAC34) Contact us for details.



FLOW TUBE



O-RINGS



ADAPTER



CONNECTION

EBC FLOW METER

www.eskopacific.com
EBC DATASHEET



FOR LARGE FLOWS

Reliable measuring and monitoring of large sized flows.

For liquids and gases in process industries.

APPLICATIONS

- Process industry
- Chemical industry
- Water treatment plants
- General liquid and gas measurement

FEATURES

- Low cost
- Good corrosion resistance
- Easy maintenance and mounting
- Socket type or threaded

EBC FLOW METER

SPECIFICATIONS

| MODEL | EBC |
|---------------------|--|
| METERING TUBE | GRILAMID® TR 55 or PES |
| Adapter | PVC (Optional CPVC, Kynar® or steel) |
| Float | AISI 304 / 316 |
| O-ring seals | Nitrile (optional Viton® or EPDM) |
| Maximum pressure | 145 psi 68°F (20°C) |
| Maximum temperature | 122°F / 50°C @ 29 psi |
| Connections | 1 1/2" NPT or socket (1 1/4" available) |
| Weight | 2.2 lb (0.98 kg) |
| Build options | Flow tube, O-ring seals, threads, calibration for non-standard liquids and gases |

FLOW METER **EBC** -

09/2018

| FLOW RANGE | WATER | | AIR | | |
|------------|-------|-----|------|-------|----------|
| | GPM | LPM | SCFM | NLPM | |
| 14 | 50 | | 75 | 2000 | A |
| 28 | 105 | | 115 | 3000 | B |
| 42.5 | 160 | | 160 | 4250 | C |
| 50 | 200 | | 240 | 6000 | D |
| 80 | 300 | | 320 | 8500 | E |
| 100 | 375 | | 525 | 14000 | F |
| 130 | 500 | | - | - | G |

| | | |
|-------|-----------------------------|----------|
| SCALE | Water GPM | 1 |
| | Air SCFM (14.7 psia @ 68°F) | 2 |
| | Dual Scale GPM / SCFM | 3 |
| | Water LPM | 4 |
| | Air NLPM (101.3 kPa @ 20°C) | 5 |
| | Dual Scale LPM / NLPM | 6 |
| | Relative Scale (1-10) | R |

| | | |
|---------|---------------------|----------|
| OPTIONS | PES/PSU flow tube | P |
| | EBC Prox Holder | A |
| | Socket type | S |
| | 1-1/4" threads | F |
| | Viton® O-ring seals | V |
| | EPDM O-ring seals | E |
| | CPVC end connectors | C |

HOW TO SPECIFY (For example EBC-A1-P)

1. Select connection size (EBC for 1/2")
2. Select flow range/scale (D1 for 2.2 GPM water)
3. Selection options (P for PES flow tube)

SPECIAL ORDER CONSTRUCTION

For custom flow meters use order code EBC-XXXXX.

A unique manufacturing number will be assigned at the time of production (eg. EBC-EAC34) Contact us for details.



FLOW TUBE



O-RINGS



ADAPTER



CONNECTIONS

EFR₃ CONSTANT FLOW REGULATOR

www.eskopacific.com
EFR₃ DATASHEET



MAINTAINS FLOWS for liquid flows where supply or backpressure varies and for gas flows where backpressure varies.

For flows up to 3 liters/minute.

APPLICATIONS

- Liquid and gas purge applications
- Tank level measurement
- Designed for use with ELF and ESKO legacy L-meters

FEATURES

- Solid, heavy-duty construction
- Clearly labelled connection points
- Compatible with variable area flow meters of corresponding range
- North American part sizes

EFR₃ CONSTANT FLOW REGULATOR

SPECIFICATIONS

| MODEL | EFR ₃ |
|-------------------------------|--|
| BODY MATERIAL | SS316 |
| Membrane | EPDM |
| O-ring seals | Nitrile (optional Viton® or EPDM) |
| Nominal flow | 36 GPH (2.3 LPM) H ₂ O |
| Maximum flow | 50 GPH (3 LPM) H ₂ O |
| Maximum differential pressure | 290 psi |
| Maximum static pressure | 290 psi |
| Maximum temperature | 167°F / 75°C |
| Connections | 1/4" NPT |
| Weight | 1.66 lb (0.75 kg) |
| Installation position | Vertical |
| Build options | Nitrile, Viton® or EPDM seals, connections |
| Optional accessories | Commonly paired with ELF purge flow meters |

CONSTANT FLOW REGULATOR

09/2018

EFR

EFR3

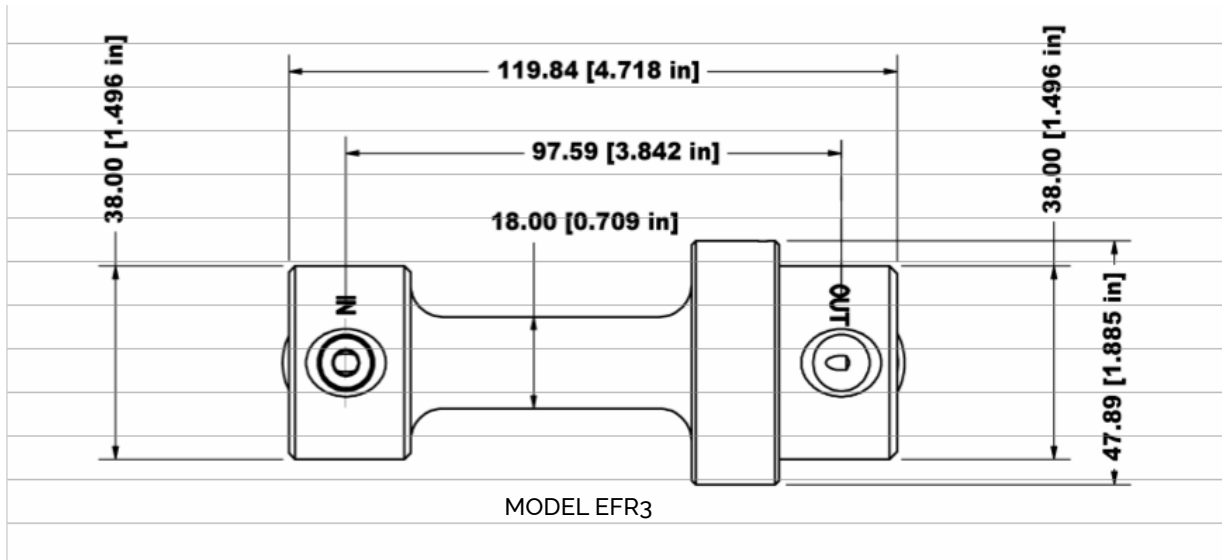
For ELF-Meters
For ELF/L-Meters with back plates
For L-Meters

3LF
3BP
3EK

EFR14

For EM and ESF meters, 3 mm valve
For EM and ESF meters, 6 mm valve
For EM and ESF meters, 9 mm valve

14/3
14/6
14/9



PAIR WITH ELF purge flow meter



O-RINGS

EFR14 CONSTANT FLOW REGULATOR

www.eskopacific.com
EFR14 DATASHEET

EFR14 CONSTANT FLOW REGULATOR



A membrane type differential pressure controller with built-in control valve for flow rate adjustment.

For applications where supply or backpressure varies.

APPLICATIONS

- Liquid and gas purge applications
- Tank level measurement
- Designed for use with EM and ESKO legacy V-meters

FEATURES

- Solid, heavy-duty construction
- Clearly labelled connection points
- Compatible with variable area flow meters of corresponding range
- North American part sizes

| MODEL | EFR14 |
|-------------------------------|--|
| BODY MATERIAL | SS316 |
| Membrane | EPDM |
| O-ring seals | Nitrile (optional Viton® or EPDM) |
| Nominal flow | 3.7 GPM (14 LPM) H ₂ O |
| Maximum flow | 5.3 GPM (20 LPM) H ₂ O |
| Maximum differential pressure | 175 psi (optional 290 psi) |
| Maximum static pressure | 360 psi |
| Maximum temperature | 194°F / 90°C |
| Connections | 1/2" NPT |
| Weight | 3.97 lb (1.80 kg) |
| Build options | Nitrile, Viton® or EPDM seals, connections |
| Optional accessories | Commonly paired with EM-flow meters |

CONSTANT FLOW REGULATOR

09/2018

EFR

EFR3

For ELF-Meters

3LF

For ELF/L-Meters with back plates

3BP

For L-Meters

3EK

EFR14

For EM and ESF meters, 3 mm valve

14/3

For EM and ESF meters, 6 mm valve

14/6

For EM and ESF meters, 9 mm valve

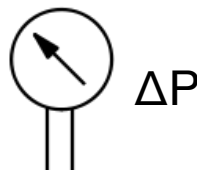
14/9



INSTALLATION ORIENTATION



O-RINGS



DIFFERENTIAL PRESSURE



CONNECTIONS

SINGLE AND DUAL SEAL WATER METERS

FOR DEMANDING APPLICATIONS
SUBSTITUTE **SS316 END BLOCKS**



EMI



EMI2

- IDEAL FOR MECHANICAL SEAL FLOWS UP TO 8.5 GPM
- OPTIONAL PRESSURIZING VALVE FOR DUAL MECHANICAL SEAL APPLICATIONS
- ALARM READY



CONSERVE WATER



SAVE ENERGY



ESF

RELIABLE SEAL WATER MONITORING

- BUILT-IN TUBE CLEANING PLUNGERS
- CLOG RESISTANT FLOW CONTROL VALVE
- EXTRA LARGE FLOW CHANNELS FOR TROUBLE FREE OPERATION
- FLOW LEVEL ALARMS
- MULTIPLE CONNECTION OPTIONS



EDF





ESF SEAL WATER MONITOR

www.eskopacific.com
ESF DATASHEET



For water flows up to 3.5 gallons per minute.

Clog resistant flow control valve and large flow channels.

APPLICATIONS

- Seal flush systems
- Single and double mechanical seals
- Gland packings
- Flow measurement

FEATURES

- Solid and reliable
- Extra large flow channels
- Clog resistant flow control valve
- Built-in tube cleaner
- Alarm ready
- Freeze resistant PSU tube available

SPECIFICATIONS

| MODEL | ESF-P | ESF-K | ESF-S |
|--|--|---|--------------------|
| BODY MATERIAL | DELTRIN® (POM) | KYNAR® (PVDF) | SS316 |
| Metering tube | Polysulphone (PSU), Borosilicate glass or PES | PES, Polysulphone (PSU) or Borosilicate glass | Borosilicate glass |
| Metallic parts | SS316 or SS304 | SS316 or SS304 | SS316 |
| O-ring seals | Viton® or EPDM | Viton® or EPDM | Viton® or EPDM |
| Maximum pressure | 435 psi | 435 psi | 435 psi |
| Maximum temperature | 212°F / 100°C (with PSU) | 266°F / 130°C (with PSU) | 266°F / 130°C |
| Connections | 3/8" or 1/2" hose barbs 3/8 " OD straight tubes 3/8" compression fittings (with nut and 2 ferrules) 1/4" NPT male or female threads | | |
| Weight (with pressure gauge, pressurizing valve and packaging) | 3.5 lb (1.5 kg) | 3.5 lb (1.5 kg) | 7.0 lb (3.2 kg) |
| Build options | Body material, metering tube, metallic parts, O-ring seals, connections | | |
| Optional accessories | Inductive adjustable alarm sensor and holder, pressure gauge (with optional red set pointer), floor mounting stand, pressurizing valve. | | |

SEAL WATER MONITOR ESF

SINGLE FLOW MONITOR

| | | |
|--------|---------|------|
| 1 LPM | 20 GPH | 120 |
| 3 LPM | 50 GPH | 350 |
| 8 LPM | 2 GPM | 82 |
| 13 LPM | 3.5 GPM | 1335 |

BODY MATERIAL Delrin® (POM)
Kynar® (PVDF)
SS316

P
K
S

CONNECTION TYPE

3/8" ID hosebarb
1/4" NPT/M adapter
1/4" NPT/F adapter
1/2" OD straight tube
1/2" ID hosebarb
3/8" OD straight tube
3/8" compression fittings (c/w nut & ferrules)
10mm ID hosebarb
1/2" compression fittings (c/w nut & ferrules)

H
M
N
O
R
S
T
W
Y

PRESSURE 15 psi
GAUGE 30 psi
60 psi
100 psi
160 psi
200 psi
300 psi
400 psi
100 psi with red set pointer
160 psi with red set pointer
200 psi with red set pointer
300 psi with red set pointer
400 psi with red set pointer
No pressure gauge

A
B
C
D
E
F
G
H
I
J
K
L
M
X

OPTIONS Pressurizing valve (for double seal)
No pressurizing valve

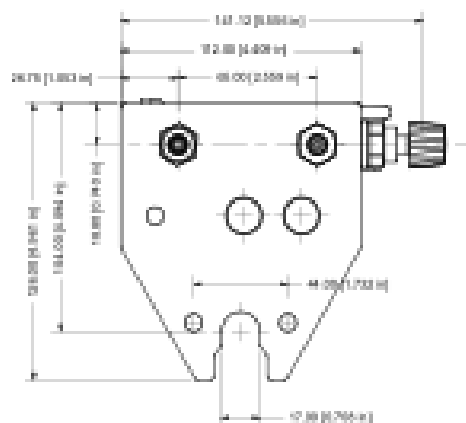
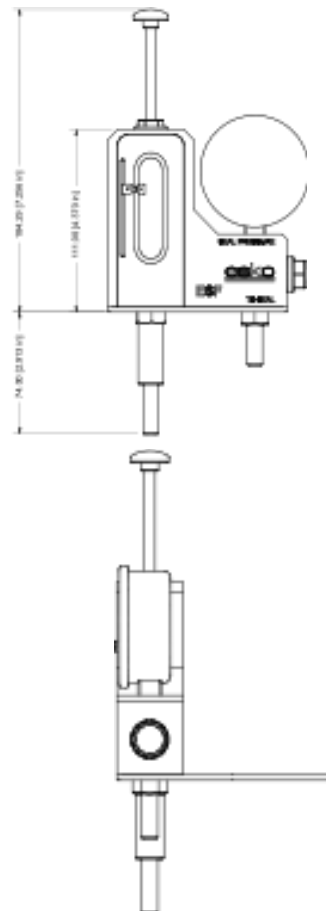
P
X

STAND Floor mounting stand
No stand

S
X

ALARMS Alarm 10-55 VDC 150 mA (IG 5919)
Alarm 20-250 VAC/DC 300 mA (IG 0374)
No alarm

A
B
X



HOW TO SPECIFY MODEL NUMBER, an EXAMPLE: ESF82-PHXPS

ESF for 2 GPM with POM end blocks, 3/8" fittings and stand:

- Specify flow rate up to 2 GPM
- Select end block material **P** for Delrin® (POM)
- Specify connection type **H** 3/8" ID hosebarb
- No pressure gauge, insert **X** in model number
- Pressurizing valve insert **P**
- Add option **S** for floor mounting stand
- No alarm, leave off trailing **X** at end

ESF82
ESF82-P
ESF82-PH
ESF82-PHX
ESF82-PHXP
ESF82-PHXPS
ESF82-PHXPS



BODY MATERIALS



FITTINGS



PRESSURE GAUGE



ALARM SENSOR



EDF DUAL SEAL WATER MONITOR

www.eskopacific.com
EDF DATASHEET

For applications requiring uninterrupted seal water flow for cooling and lubrication.

Save resources,
extend seal life.

APPLICATIONS

- Seal flush systems
- Single and double mechanical seals
- Gland packings
- Flow measurement

FEATURES

- Solid and reliable
- Extra large flow channels
- Clog resistant flow control valve
- Built-in tube cleaner
- Alarm ready
- Freeze resistant PSU tube available
- Excellent corrosion and heat resistance



SPECIFICATIONS

| MODEL | EDF-P | EDF-K |
|----------------------|--|---|
| BODY MATERIAL | DELRIN® (POM) | KYNAR® (PVDF) |
| Metering tube | Polysulphone (PSU), Borosilicate glass or PES | PES, Polysulphone (PSU) or Borosilicate glass |
| Metallic parts | SS316 or SS304 | SS316 or SS304 |
| O-ring seals | Viton® or EPDM | Viton® or EPDM |
| Maximum pressure | 435 psi | 435 psi |
| Maximum temperature | 212°F / 100°C (with PSU) | 266°F / 130°C (with PSU) |
| Connections | 3/8" or 1/2" hose barbs 3/8 " OD straight tubes 3/8" compression fittings (with nut and 2 ferrules) 1/4" NPT male or female threads | |
| Weight | 5 lb (2.3 kg) (complete with pressure gauge, pressurizing valve and packaging) | |
| Build options | Body material, metering tube, metallic parts, O-ring seals, connections | |
| Optional accessories | Inductive adjustable alarm sensor and holder, pressure gauge (with optional red set pointer), floor mounting stand, pressurizing valve | |

EDF DUAL SEAL WATER MONITOR

EDF

| | | |
|--------|---------|------|
| 1 LPM | 17 GPH | 120 |
| 3 LPM | 50 GPH | 350 |
| 8 LPM | 2 GPM | 82 |
| 13 LPM | 3.5 GPM | 1335 |

P

Kynar® (PVDF)

- 3/8" ID hosebarb
- 1/4" NPT/M adapter
- 1/4" NPT/F adapter
- 1/2" OD straight tube
- 1/2" ID hosebarb
- 3/8" OD straight tube
- 3/8" compression fittings (c/w nut & ferrules)
- 10mm hosebarb
- 1/2" compression fittings (c/w nut & ferrules)

H
M
N
O
R
S
T
W
Y

A
B
C
D
E
F
G
H
I
J
K
L
M
X

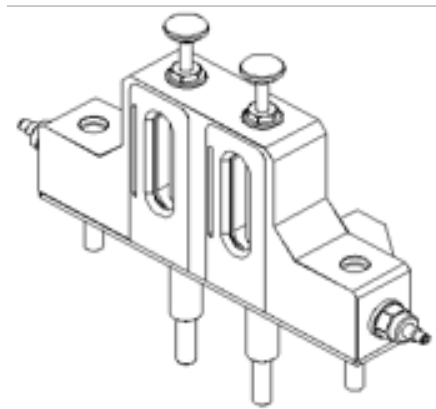
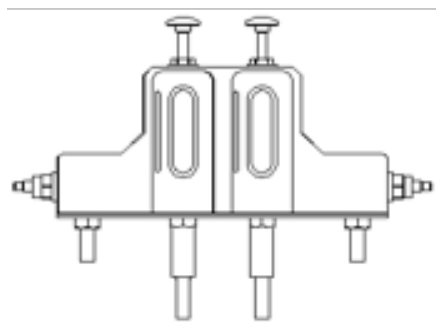
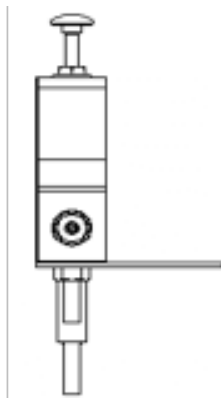
| | |
|-------|----------------------|
| STAND | Floor mounting stand |
| | No stand |

S
X

A
B
C
D
X

1. Specify flow rate up to 3.5 GPM
2. Select end block material **P** for Delrin® (POM)
3. Specify connection type **T** 3/8" compression fittings
4. No pressure gauge, insert **X** in model number
5. Pressurizing valve standard, insert **X** in model number
6. Add option **S** for floor mounting stand
7. No alarm, leave off trailing **X** at end

EDF1335
EDF1335-P
EDF1335-PT
EDF1335-PTX
EDF1335-PTXX
EDF1335-PTXXS
EDF1335-PTXXS



BODY MATERIALS



MOUNTING STAND



PRESSURE GAUGE



ALARM SENSOR(S)



EMI SINGLE FLOW SEAL WATER METER

www.eskopacific.com
EMI DATASHEET



Ideal for medium seal
flush flow rates
up to 8.5 GPM.

Easy installation with
mounting plates and
floor stands.

APPLICATIONS

- Sealing and cooling water measurement for single and double mechanical seal applications.

FEATURES

- Solid, reliable construction
- Large selection of flow ranges
- Easy to install and maintain
- Impact resistant flow tube
- Low flow alarm available

EMI SINGLE FLOW SEAL WATER METER

SPECIFICATIONS

| MODEL | EMI-D | EMI-K | EMI-S |
|-----------------------|---|--------------------------------------|--------------------------------------|
| BODY MATERIAL | DELTRIN® (POM) | KYNAR® (PVDF) | SS316 |
| Metering tube | Grilamid® TR55 or Polysulphone (PSU) | Grilamid® TR55 or Polysulphone (PSU) | Grilamid® TR55 or Polysulphone (PSU) |
| Side plate | SS316 | SS316 | SS316 |
| O-ring seals | Nitrile (optional Viton® or EPDM) | Nitrile (optional Viton® or EPDM) | Nitrile (optional Viton® or EPDM) |
| Maximum pressure | 290 psi | 290 psi | 440 psi |
| Maximum temperature | | | |
| Grilamid® tube | 176°F / 80°C | 176°F / 80°C | 176°F / 80°C |
| Polysulphone PSU tube | 248°F / 120°C | 248°F / 120°C | 248°F / 120°C |
| Connections | 1/2" NPT female threads | 1/2" NPT female threads | 1/2" NPT female threads |
| Weight | 2.1 lb (0.95 kg) | 2.1 lb (0.95 kg) | 4.4 lb (2.0 kg) |
| Build options | Body material, metering tube, O-ring seals | | |
| Optional accessories | Inductive adjustable alarm, pressure gauge (with optional red set pointer), mounting stand, flow marker for optimal flow rate or range, pair with constant flow regulator Model EFR | | |

SEAL WATER METER

EMI

SINGLE FLOW TUBE
DUAL TUBE MODEL

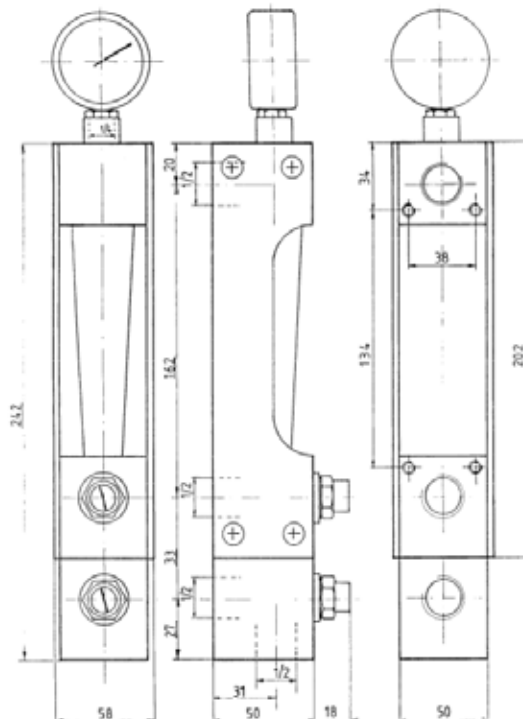
2

END BLOCK MATERIAL Aluminum A
Delrin® (POM) D
Kynar® (PVDF) K
SS316 S

| FLOW RANGE | | WATER | |
|------------|------|-------|---|
| GPM | LPM | | |
| 0.5 | 2 | | A |
| 0.9 | 3 | | B |
| 1.4 | 5 | | C |
| 2.2 | 9 | | D |
| 2.6 | 10 | | E |
| 4.25 | 16 | | F |
| 6 | 22 | | G |
| 8.5 | 32.5 | | H |

SCALE Water GPM 1
Water LPM 4
Relative Scale (1-10) R

OPTIONS PES/PSU flow tube P
Viton® O-ring seals V
EPDM O-ring seals E
Backpressure valve B
Gauge (160 psi standard) G
Mounting bracket M



BODY MATERIALS



METERING TUBE



PRESSURE GAUGE



ALARM SENSOR



EMI₂ DUAL SEAL WATER METER

www.eskopacific.com
EMI₂ DATASHEET



Ideal for medium seal
flush flow rates
up to 8.5 GPM.

Monitors both flow rate
into the seal and the
return (drain) flow out.

APPLICATIONS

- Sealing and cooling water measurement for single and double mechanical seal application

FEATURES

- Solid, reliable construction
- Large selection of flow ranges
- Easy to install and maintain
- Impact resistant flow tube
- Low flow alarm available

EMI₂ DUAL SEAL WATER METER

SPECIFICATIONS

| MODEL | EMI ₂ -D | EMI ₂ -K | EMI ₂ -S |
|-----------------------|---|--------------------------------------|--------------------------------------|
| BODY MATERIAL | DELRIN® | KYNAR® | SS316 |
| Metering tube | Grilamid® TR55 or Polysulphone (PSU) | Grilamid® TR55 or Polysulphone (PSU) | Grilamid® TR55 or Polysulphone (PSU) |
| Side plate | SS316 | SS316 | SS316 |
| O-ring seals | Nitrile (optional Viton® or EPDM) | Nitrile (optional Viton® or EPDM) | Nitrile (optional Viton® or EPDM) |
| Maximum pressure | 290 psi | 290 psi | 440 psi |
| Maximum temperature | | | |
| Grilamid® tube | 176°F / 80°C | 176°F / 80°C | 176°F / 80°C |
| Polysulphone PSU tube | 248°F / 120°C | 248°F / 120°C | 248°F / 120°C |
| Connections | 1/2" NPT female threads | 1/2" NPT female threads | 1/2" NPT female threads |
| Weight | 2.1 lb (0.95 kg) | 2.1 lb (0.95 kg) | 4.4 lb (2.0 kg) |
| Build options | Body material, metering tube, O-ring seals | | |
| Optional accessories | Inductive adjustable alarm, pressure gauge (with optional red set pointer), mounting stand, flow marker for optimal flow rate or range, pair with constant flow regulator Model EFR | | |

SEAL WATER METER

EMI

SINGLE FLOW TUBE
DUAL TUBE MODEL

2

END BLOCK MATERIAL Aluminum A
Delrin® (POM) D
Kynar® (PVDF) K
SS316 S

| FLOW RANGE | | WATER | |
|------------|------|-------|--|
| GPM | LPM | | |
| 0.5 | 2 | A | |
| 0.9 | 3 | B | |
| 1.4 | 5 | C | |
| 2.2 | 9 | D | |
| 2.6 | 10 | E | |
| 4.25 | 16 | F | |
| 6 | 22 | G | |
| 8.5 | 32.5 | H | |

SCALE Water GPM 1
Water LPM 4
Relative Scale (1-10) R

OPTIONS PES/PSU flow tube P
Viton® O-ring seals V
EPDM O-ring seals E
Backpressure valve B
Gauge (160 psi standard) G
Mounting bracket M



BODY MATERIALS



METERING TUBE



PRESSURE GAUGE



ALARM SENSOR



EHI FLOW METER

www.eskopacific.com
EHI DATASHEET



Ideal for medium seal
flush flow rates.

Easy installation with
mounting plates and
floor stands.

APPLICATIONS

- Sealing and cooling water measurement
- Lubrication oil measurement
- Mixing of gases

FEATURES

- Large clear scale for quick and accurate reading
- Solid, reliable construction
- Built-in flow control valve
- Large selection of flow ranges and materials
- Easy to install and maintain
- Impact resistant tube

EHI FLOW METER

SPECIFICATIONS

| MODEL | EHI-D | EHI-K | EHI-S |
|----------------------|--|--------------------------------------|--------------------------------------|
| BODY MATERIAL | DELRIN® | KYNAR® | SS316 |
| Metering tube | Grilamid® TR55 or Polysulphone (PSU) | Grilamid® TR55 or Polysulphone (PSU) | Grilamid® TR55 or Polysulphone (PSU) |
| Side plate | SS316 | SS316 | SS316 |
| O-ring seals | Nitrile (optional Viton® or EPDM) | Nitrile (optional Viton® or EPDM) | Nitrile (optional Viton® or EPDM) |
| Maximum pressure | 290 psi | 290 psi | 440 psi |
| Maximum temperature | 176°F / 80°C | 176°F / 80°C | 176°F / 80°C |
| Connections | 1" NPT | 1" NPT | 1" NPT |
| Weight | 3.1 lb (1.4 kg) | 3.1 lb (1.4 kg) | 4.2 lb (1.9 kg) |
| Build options | Body material, metering tube, O-ring seals, calibration for non-standard liquids and gases | | |
| Optional accessories | Inductive adjustable alarm, pressure gauge (with optional red set pointer) | | |

SEAL WATER METER

EHI

SINGLE FLOW TUBE
DUAL TUBE MODEL

2

END BLOCK MATERIAL Aluminum
Delrin® (POM)
Kynar® (PVDF)
SS316

A
D
K
S

FLOW RANGE

WATER

| GPM | LPM | |
|-----|-----|---|
| 11 | 40 | A |
| 15 | 55 | B |
| 17 | 65 | C |
| 22 | 85 | D |

SCALE Water GPM
Water LPM
Relative Scale (1-10)

1
4
R

OPTIONS Alarm readiness
PES/PSU flow tube
Viton® O-ring seals
EPDM O-ring seals

A
P
V
E

09/2018

HOW TO SPECIFY MODEL NUMBER, an EXAMPLE: EHI-DB1

EHI meter for water flow, no alarm option

1. Select meter type **EHI** (valve on inlet)
2. Specify end block material **D** for Delrin® (POM)
3. Specify flow range **B** up to 15 GPM water
4. Choose scale type **1** for GPM

EHI-
EHI-D
EHI-DB
EHI-DB1



BODY MATERIALS



METERING TUBE



PRESSURE GAUGE



ALARM SENSOR



EH12 DUAL FLOW METER

www.eskopacific.com
EH12 DATASHEET



Ideal for flows up to
30 GPM
(120 liters/minute)

Substitute SS316 end
blocks for demanding
applications.

APPLICATIONS

- Sealing and cooling water measurement
- Lubrication oil measurement
- Mixing of gases

FEATURES

- Solid, reliable construction
- Built-in flow control valve
- Large selection of flow ranges and materials
- Easy to install and maintain
- Impact resistant flow tube
- Alarm ready

EH12 DUAL FLOW METER

SPECIFICATIONS

| MODEL | EH12-D | EH12-K | EH12-S |
|--|--|--------------------------------------|--------------------------------------|
| BODY MATERIAL | DELRIN® (POM) | KYNAR® (PVDF) | SS316 |
| Metering tube | Grilamid® TR55 or Polysulphone (PSU) | Grilamid® TR55 or Polysulphone (PSU) | Grilamid® TR55 or Polysulphone (PSU) |
| Side plate | SS316 | SS316 | SS316 |
| O-ring seals | Nitrile (optional Viton® or EPDM) | Nitrile (optional Viton® or EPDM) | Nitrile (optional Viton® or EPDM) |
| Maximum pressure | 290 psi | 290 psi | 440 psi |
| Maximum temperature with Grilamid® flow tube | 176°F / 80°C | 176°F / 80°C | 176°F / 80°C |
| Connections | 1" NPT | 1" NPT | 1" NPT |
| Build options | Body material, metering tube, O-ring seals, calibration for non-standard liquids and gases | | |
| Optional accessories | Inductive adjustable alarm, pressure gauge (with optional red set pointer) | | |

SEAL WATER METER

EHI

SINGLE FLOW TUBE
DUAL TUBE MODEL

2

END BLOCK MATERIAL Aluminum
Delrin® (POM)
Kynar® (PVDF)
SS316

A
D
K
S

FLOW RANGE

WATER

GPM LPM

11 40
15 55
17 65
22 85

A
B
C
D

SCALE

Water GPM
Water LPM
Relative Scale (1-10)

1
4
R

OPTIONS

Alarm readiness
PES/PSU flow tube
Viton® O-ring seals
EPDM O-ring seals

A
P
V
E

09/2018

HOW TO SPECIFY MODEL NUMBER, an EXAMPLE: EHI2-DB1

EHI2 dual meter for water flow, no alarm option

1. Select meter type **EHI2** (valve on inlet)
2. Specify end block material **D** for Delrin® (POM)
3. Specify flow range **B** up to 15 GPM water
4. Choose scale type **1** for GPM

EHI2-
EHI2-D
EHI2-DB
EHI2-DB1



BODY MATERIALS



METERING TUBE



PRESSURE GAUGE



ALARM SENSOR



SEAL WATER PARTS & ACCESSORIES

www.eskopacific.com
SEAL WATER PARTS & ACCESSORIES



A full range of parts for all seal water meters sold by ESKO, past and present.

REPLACEMENT PARTS

- O-ring kits
- Floats
- Valves
- Pressure gauges

ACCESSORIES

- Mounting brackets
- Floor stands
- Check valves
- Proximity switches

CONTACT US FOR REPLACEMENT KITS, PARTS AND ACCESSORIES

| | |
|-------------------------------------|---|
| O-ring kits | Viton® or EPDM |
| Floats | Specify flow meter model number when ordering |
| Pressure gauges | With optional red set pointer |
| Floor mount stand for ESF/EDF meter | SS316 construction |
| Check valves construction | SS316 body, POM internals |
| Check valves fittings: | 1/2" NPT x 1/2" hosebarb 1/2" NPT x 3/8" compression fitting 3/8" NPT x 3/8" hosebarb 1/2" NPT x 3/8" hosebarb 3/8" NPT x 3/8" compression fitting 1/4" NPT x 1/4" NPT |
| Proximity switches: | |
| PROX/12-18-2-DC-NO/NC | 10-55 VDC, 150 ma |
| PROX/12-18-2-AC/DC-NO | 20-250 VAC/DC, 300 ma |

SEAL WATER METER ACCESSORIES

STAND

09/2018

| MODEL | TYPE |
|-------|------|
|-------|------|

STAND/ESF Floor mount stand for ESF/EDF meter

| CHECK VALVES | TYPE |
|--------------|------|
|--------------|------|

| | |
|----------|-------------------------------------|
| ES-2044 | 1/2" NPT x 1/2" hosebarb |
| ES-2004 | 1/2" NPT x 3/8" hosebarb |
| ES-2074 | 1/2" NPT x 3/8" compression fitting |
| ES-2029 | 3/8" NPT x 3/8" hosebarb |
| ES-2075 | 3/8" NPT x 3/8" compression fitting |
| CMM20552 | 1/4" NPT x 1/4" NPT |

PROXIMITY SWITCHES

| MODEL | |
|-------|--|
|-------|--|

| | |
|-----------------------|-----------------------|
| PROX/12-18-2-DC-NO/NC | 10-55 VDC, 150 mA |
| PROX/12-18-2-AC/DC-NO | 20-250 VAC/DC, 300 mA |



OIL LUBRICATION PRODUCTS

VARIABLE AREA FLOW METERS

- MULTI-TUBE UNITS AVAILABLE WITH MIXED FLOW RATES
- RELIABLE MEASURING AND MONITORING OF OIL FLOWS
- FOR APPLICATIONS IN:
 - > CIRCULATING OIL LUBRICATION SYSTEMS
 - > INDUSTRIAL PROCESS CONTROL
- MONITORING SYSTEMS FEATURE:
 - > ALARM AMPLIFIERS
 - > LARGE SELECTION OF FLOW RANGES



ELO6



EM05

MULTI-TUBE METERS

MODULAR DESIGN

LOW FLOW ALARM READY

NK ALARM AMPLIFIER MONITORS UP TO 30 FLOWS

- CREATE A MONITORING SYSTEM USING EM-SERIES MULTI-TUBE FLOW METERS
- LED INDICATORS ON FRONT COVER
- FOR APPLICATIONS IN:
 - > LUBRICATION OIL MONITORING
 - > INDUSTRIAL FLUID FLOW MONITORING
 - > PROCESS CONTROL



NK-30 ALARM AMPLIFIER MAINBOARD

NK-2 ALARM AMPLIFIER





ELO VARIABLE AREA MULTI-TUBE

www.eskopacific.com
ELO MULTI-TUBE DATASHEET



Reliable measuring
for oil flows.

Modular design allows
for 1-10 tubes in a bank.

A superior flow meter at
a competitive price.

APPLICATIONS

- Lubrication of bearing
- Flow measurement

FEATURES

- Solid construction, reliable operation
- North American standard size parts
- Single inlet for easy installation
- Individual tubes can be replaced as necessary

ELO VARIABLE AREA MULTI-TUBE FLOW METER

SPECIFICATIONS

| MODEL | ELO-E | ELO-E |
|----------------------|---|-----------------------------------|
| BODY MATERIAL | ACRYLIC | TROGAMID® |
| Base material | Aluminum or POM | Aluminum or POM |
| Metallic parts | SS316 | SS316 |
| O-ring seals | Nitrile (optional Viton® or EPDM) | Nitrile (optional Viton® or EPDM) |
| Maximum pressure | 290 psi @ 85°F (30°C) | 290 psi @ 85°F (30°C) |
| Maximum temperature | 167°F / 75°C | 158°F / 70°C |
| Connections inlet | 1/2" NPT or 3/4" NPT | 1/2" NPT or 3/4" NPT |
| Connections outlet | 1/4" NPT or 1/2" NPT | 1/4" NPT or 1/2" NPT |
| Build options | Flow tube material, base material, number of tubes 1-10, O-ring seals | |
| Optional accessories | Handknob | |



FLOW METER

ELO
- E

SINGLE FLOW TUBE

MULTI-TUBE, NUMBER OF METERING TUBES (2-10)

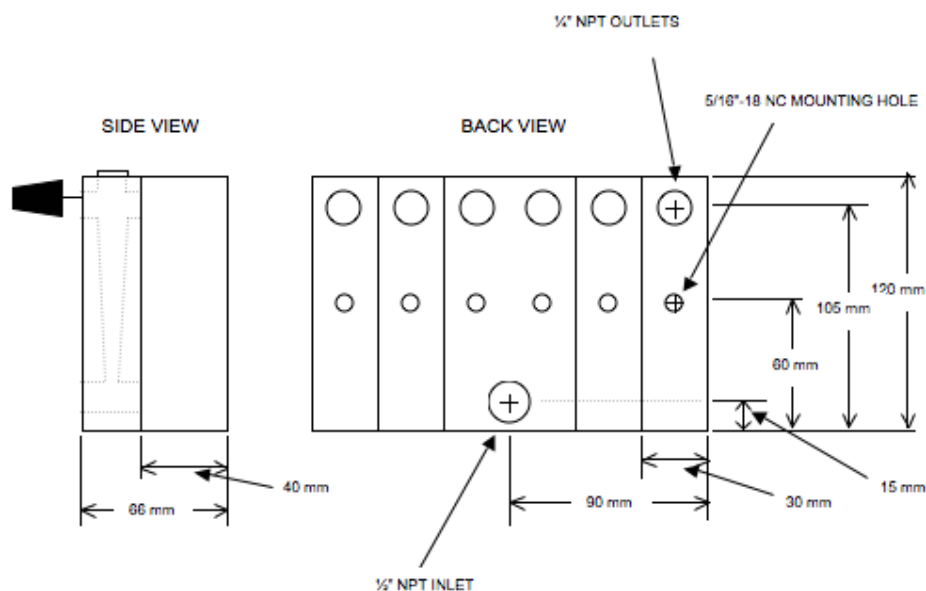
n
FLOW RANGE

Manufacturing number
(flow range, units and options)

XXXX

OPTIONS

Hand adjusting knob
 Nitrile O-ring seals (standard)
 Viton® O-ring seals
 EPDM O-ring seals
 Aluminum base blocks
 POM base blocks
 1/2" NPT inlet / 1/4" NPT outlets
 3/4" NPT inlet / 1/2" NPT outlets
 Acrylic flow tube
 Trogamid® flow tube



SPECIAL ORDER CONSTRUCTION

A unique manufacturing number will be assigned at the time of production.
 Contact us for details and ordering information.



FLOW TUBE



NUMBER OF TUBES



O-RINGS



HAND KNOB

esko



2018.09

EMO MULTI-TUBE FLOW METER

www.eskopacific.com
EMO MULTI-TUBE DATASHEET



For medium flows up to
2.5 GPM / 10 LPM

For standard lubricating
oils

APPLICATIONS

- Circulating lubrication oil systems
- Also for water and air applications

FEATURES

- Solid construction, reliable operation
- Single inlet reduces piping
- Large selection of flow ranges
- Easy to install, clean and maintain
- Can be fitted with low flow alarm
- Impact resistant flow tube
- Custom calibration for all operating conditions

EMO MULTI-TUBE FLOW METER

SPECIFICATIONS

| MODEL | EMO-E | |
|----------------------|--|-----------------------------------|
| METERING TUBE | GRILAMID® TR55 | POLYSULPHONE (PSU) |
| Body material | Aluminum | Aluminum |
| Metallic parts | SS316 | SS316 |
| O-ring seals | Nitrile (optional Viton® or EPDM) | Nitrile (optional Viton® or EPDM) |
| Maximum pressure | 440 psi | 440 psi |
| Maximum temperature | 176°F / 80°C | 248°F / 120°C |
| Connections inlet | 3/4" NPT | 3/4" NPT |
| Connections outlet | 1/2" NPT | 1/2" NPT |
| Weight | 1.7 lbs / 0.75 kg per tube | 1.7 lbs / 0.75 kg per tube |
| Build options | Flow tube material, custom calibration for all operating conditions, O-ring seals | |
| Optional accessories | Can be fitted with inductive low flow alarm, pressure gauge (with optional red set pointer), flow marker (Model EMP) | |



FLOW METER

EMO

SINGLE FLOW TUBE

MULTI-TUBE, NUMBER OF TUBES (2-7)

n

END BLOCK MATERIAL Aluminum **A**
Delrin® (POM) **D**
Kynar® (PVDF) **K**
SS316 **S**

FLOW RANGE

WATER

| GPM | LPM | SCFM | NLPM | |
|------|-----|------|------|----------|
| 0.5 | 2 | 2.75 | 75 | A |
| 0.9 | 3 | 5 | 130 | B |
| 1.4 | 5 | 6.5 | 170 | C |
| 2.2 | 9 | 10 | 260 | D |
| 2.6 | 10 | 11 | 300 | E |
| 4.25 | 16 | 17 | 450 | F |
| 5 | 20 | 24 | 650 | G |
| 8 | 30 | 27.5 | 700 | H |

AIR

| | | |
|-------|-----------------------------|----------|
| SCALE | Water GPM | 1 |
| | Air SCFM (14.7 psia @ 68°F) | 2 |
| | Dual scale GPM / SCFM | 3 |
| | Water LPM | 4 |
| | Air NLPM (101.3 kPa @ 20°C) | 5 |
| | Dual scale LPM / NLPM | 6 |
| | Relative scale (1-10) | R |

| | | |
|---------|--------------------------|----------|
| OPTIONS | PES/PSU flow tube | P |
| | Viton® O-ring seals | V |
| | EPDM O-ring seals | E |
| | Backpressure valve | B |
| | Gauge (160 psi standard) | G |
| | Mounting bracket | M |

EMO multi-tube meters can be used for standard lubricating oils and also for water and air applications.

CONSTRUCTED FOR OIL APPLICATIONS:

1-7 tubes, built with aluminum end blocks

CONSTRUCTED FOR WATER AND AIR APPLICATIONS:

1-3 tubes, built with SS end blocks
1-2 tubes, built with Delrin® end blocks

Contact us to discuss your monitoring needs.

HOW TO SPECIFY Model EMO, with valve on outlet, an example: EMO2-SG1-V

1. Select number of flow tubes **2**
2. Select **S** for SS316 end blocks
3. Specify flow range **G** for up to 5 GPM
4. Choose scale type **1** for water
5. Add build option **V** for Viton® O-rings

EMO2-
EMO2-S
EMO2-SG
EMO2-SG1
EMO2-SG1-V

SPECIAL ORDER CONSTRUCTION

Use code EM-EXXXX. A unique manufacturing number will be assigned at the time of production (eg. EMO-E7345)
Contact us for details.



FLOW TUBE



INDUCTIVE ALARM



BODY MATERIAL



O-RINGS

OVAL GEAR METERS

POSITIVE DISPLACEMENT METERS

- OIL LUBRICATION MONITORING
- INDUSTRIAL PROCESS CONTROL
- MAINTAINS ACCURACY REGARDLESS OF VISCOSITY OF FLOW MEDIUM



EGM OVAL GEAR METER



EGL MULTI-BANK OVAL GEAR METER

LUBRICATION MONITORING SYSTEMS

ELP LUBE PANEL

CUSTOM PANELS WITH TOUCH SCREEN INTERFACE

ELS LUBRICATION STATION



- OIL LUBRICATION MONITORING
- COMBINE AN **ELS** MONITORING SYSTEM WITH **EGL** OVAL GEAR METERS ON A STAINLESS STEEL PANEL OR ENCLOSURE
- USER-FRIENDLY TOUCH SCREEN INTERFACE



EGL OVAL GEAR METER

www.eskopacific.com
EGL OVAL GEAR METER DATASHEET



Maintains accuracy
regardless of viscosity of
flow medium

Up to 12 meters on
manifold

APPLICATIONS

- Lubrication oil monitoring
- Industrial fluid flow monitoring
- Process control

FEATURES

- High visibility of oil flow indication through robust transparent cover
- 1-12 meters on manifold
- Insensitive to viscosity variation
- Large viscosity range (30-1000 cSt)
- Pulse output
- Solid construction

EGL OVAL GEAR METER

SPECIFICATIONS

| MODEL | EGL |
|--------------------------|---|
| FLOW RATE | 1,3 or 6 liters/minute (2, 6 or 12 pints/minute) |
| Base and metering blocks | Alumimum |
| Oval gears | Grilamid® |
| Gear covers | Trogamid® |
| Valve spindles | SS316 |
| O-ring seals | Nitrile (optional Viton® or EPDM) |
| Oil filtering | 10-15 micron recommended |
| Maximum pressure | 10 bar @ 80°C / 145 psi @ 176°F |
| Connections | Inlet 1" NPTF Outlets 1/2" NPT female threads |
| Build options | O-ring seals, connections, number of meters on manifold |



FLOW METER

EGL

1-12

| FLOW RANGE | LPM | PPM | |
|------------|-----|-----|---|
| | 1 | 2 | 1 |
| | 3 | 6 | 3 |
| | 6 | 12 | 6 |

Lubrication systems incorporating custom numbers of meters, various combinations of sizes, and configurations are available.

Pair with **ELP** Lube Panel Systems and **ELS** Lubrication Station:



Contact us to discuss your monitoring needs.



NUMBER OF METERS

1-800-665-3756



O-RINGS

www.eskopacific.com



CUSTOM LUBE PANEL



esko PACIFIC SALES



EGM LARGE FLOW OVAL GEAR METER

www.eskopacific.com
EGM DATASHEET



Maintains accuracy
regardless of viscosity
of flow medium

APPLICATIONS

- Lubrication oil monitoring
- Industrial fluid flow monitoring
- Process control

FEATURES

- High visibility of oil flow indication through robust transparent cover
- Insensitive to viscosity variation
- Large viscosity range (30-1000 cSt)
- Pulse output
- Solid construction

EGM LARGE FLOW OVAL GEAR METER

SPECIFICATIONS

| MODEL | EGM |
|------------------------|--|
| FLOW RATE | 10, 20, 30, 60 or 100 liters / minute (20, 40, 60, 120 or 200 pints / minute) |
| Base & metering blocks | Aluminum |
| Oval gears | Brass |
| Gear covers | Trogamid® |
| Valve spindles | SS316 |
| O-ring seals | Nitrile (optional Viton® or EPDM) |
| Maximum pressure | 10 bar @ 80°C / 145 psi @ 176°F |
| Maximum temperature | 80°C / 176°F |
| Connections | 1" NPTF |
| Build options | O-ring seals, connections |
| Optional accessories | By-pass valve |



09/2018

OVAL GEAR METER

EGM

-

FLOW RANGE (LPM) 3 lpm with 1/2" connections
6 lpm with 1/2" connections

3
6

OVAL GEAR METER

EGM

-

FLOW RANGE (LPM) 10 lpm with 1" connections
20 lpm with 1" connections
30 lpm with 1" connections

10
20
30

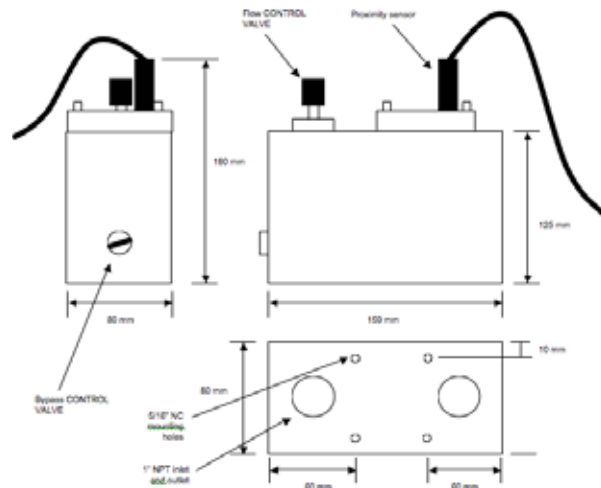
OVAL GEAR METER

EGP

-

FLOW RANGE (LPM) 1 lpm with 1/2" connections
3 lpm with 1/2" connections
6 lpm with 1/2" connections

1
3
6



EGM LARGE FLOW OVAL GEAR METER

Lubrication systems incorporating custom numbers of meters, various combinations of sizes, and configurations are available.

Pair with **ELP** Lube Panel Systems and **ELS** Lubrication Station:



Contact us to discuss your monitoring needs.



BYPASS VALVE



O-RINGS



CUSTOM LUBE PANEL



NK ALARM AMPLIFIER

www.eskopacific.com
NK DATASHEET



Monitors up to 30 sensors
with a single output.

APPLICATIONS

- Create a monitoring system using Model EM multi-tube flow meters
- Lubrication oil monitoring
- Industrial fluid flow monitoring
- Process control

FEATURES

- Connections for up to 30 sensors
- Alarm indicator LED on front cover
- SPDT potential free contact
- Single output

NK ALARM AMPLIFIER

SPECIFICATIONS

| MODEL | NK ALARM AMPLIFIER |
|----------------------|--|
| SUPPLY | 110 VAC or 220 VAC |
| Inputs | Inductive proximity sensors |
| Outputs | 10A 250 VAC 10A @ 24 VDC 1/4 HP @ 120 VAC |
| Protection | IP 54 |
| Local indicators | Green: Power ON Red: ALARM |
| Build options | Supply voltage, number of inputs |
| Optional accessories | Connect up to 30 alarm sensors, custom enclosure, stand-alone or interlock operation |



NK ALARM AMPLIFIER

| | | | | |
|----------------|---------------|-----|---|---------|
| NK | | - | / | 09/2018 |
| INPUTS | 1 - 2 inputs | 2 | | |
| | 1 - 6 inputs | 6 | | |
| | 1 - 12 inputs | 12 | | |
| | 1 - 20 inputs | 20 | | |
| | 1 - 30 inputs | 30 | | |
| SUPPLY VOLTAGE | 110 VAC | 110 | | |
| | 220 VAC | 220 | | |



ALARM SENSOR



ELS OIL FLOW MONITORING

www.eskopacific.com
ELS DATASHEET

LUBRICATION STATION

For remote monitoring in demanding paper industry applications.

APPLICATIONS

- Lubrication oil monitoring
- Industrial fluid flow monitoring
- Process control

FEATURES

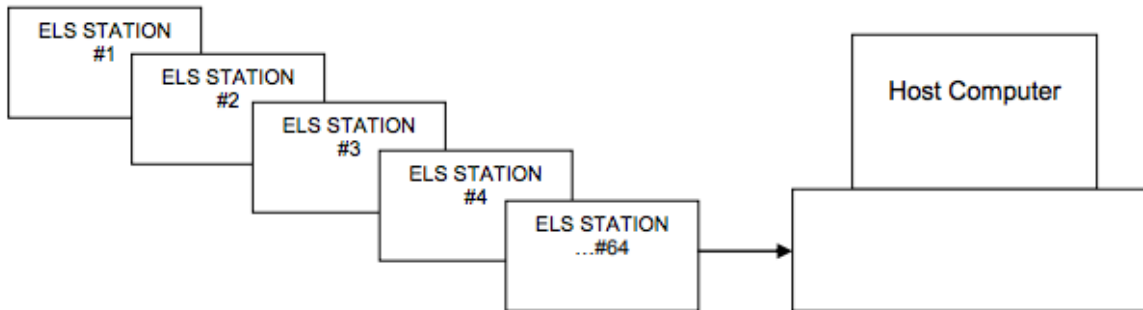
- Monitors up to 64 oval gear meters
- Highly visible color touch screen display
- Easy to use touch screen for selecting user limits
- Robust stainless steel cabinet
- Designed for demanding paper industry applications
- Remote monitoring available to PC, DCS or PLC



SPECIFICATIONS

| MODEL | ELS |
|-----------------------|--|
| PULSE INPUTS | 64 max; open collector proximity sensors |
| Serial port | Selectable RS-422/495 or RS-232 |
| Alarm outputs | 8 potential free gold-plated dry contacts |
| Supply voltage | 110 VAC |
| Display | 5.5" color touchscreen (320 x 240 resolution) |
| Operating temperature | +50 .. +120°F (+10 .. 50°C) |
| Maximum temperature | 80°C / 176°F |
| Relative humidity | 20..80% |
| Maximum vibration | < ± 20 m/s ² < 2 g |
| Protection | IP 65 |
| Dimensions/weight | 18" width x 15" height x 5" depth, approx 11 lbs (5 kg) |
| Build options | Analog input, serial port, alarm outputs, supply voltage |

- Up to 64 stations can be connected to the host computer, making the maximum system capacity over 4000 flow monitoring points.
- The ESKO LUBE MONITORING software in the HOST COMPUTER stores the flow values for all points for all time.
- Historical trending of ALL flow points set limits is available.



SERIAL PORT CONNECTOR



ELP LUBE PANEL SYSTEMS

www.eskopacific.com
ELP DATASHEET



Complete monitoring system custom built to meet your requirements.

APPLICATIONS

- Combines an ELS monitoring system with EGL oval gears on a SS panel or enclosure
- Lubrication oil monitoring
- Industrial fluid flow monitoring
- Process control

FEATURES

- Color touchscreen for setting alarm points
- Single inlet manifold for easy installation
- Allows for up to 64 points to be monitored
- Robust transparent meter covers provide highly visible oil flow indication

ELP LUBE PANELS COMPLETE MONITORING

SPECIFICATIONS

| MODEL | ELP |
|----------------------|--|
| Build options | Custom built to meet your requirements |
| Optional accessories | Pair with ELS monitoring system and EGL oval gear meters |



CUSTOM BUILT



WITH ELS ELECTRONICS



EGL OVAL GEAR METER



EGM OVAL GEAR METER

SHEET BREAK & FELT GUIDE SYSTEMS

ESTRAC 1000 SHEET BREAK DETECTOR



- OPTICAL NON-CONTACT SHEET BREAK SYSTEMS FOR RELIABLE BREAK DETECTION
- RUGGED INDUSTRIAL DESIGN
- BASED ON MODULATED INFRARED LIGHT
- CONTINUOUS AND PRECISE MONITORING



FELT GUIDE SYSTEMS

ESTRAC 2000 NON-CONTACT GUIDE SYSTEM



- INCREASES FABRIC LIFE
- ELIMINATES WEAR AND TEAR OF EDGE
- IMPROVES RUN-TIME, REDUCES UNSCHEDULED DOWNTIME
- OUTPUT CAN BE MONITORED IN CONTROL ROOM



ESTRAC 1000 INFRARED SHEET BREAK DETECTOR

www.eskopacific.com
ESTRAC 1000 DATASHEET



COMPLETE TURN-KEY SOLUTION

No missed breaks

APPLICATIONS

- The detector can be installed as a stand-alone system or it can be connected to a machine control system to give continuous trending of break data and possible head contamination.
- The control device is equipped with a mA output along with alarm relay contacts.

FEATURES

- One-sided detection with a short detection distance of 4-6"
- Small sensor head for tight installations,
- No electrical components in process area.
- Fast measuring frequency 5kHz based on IR reflection.

SPECIFICATIONS

| MODEL | ESTRAC 1000 |
|-------------------------------|--|
| MATERIAL | SS316 |
| Measurement type | Modulated infrared light, frequency 5 Hz |
| Detector distance | 4 inches to 6 inches from sheet surface |
| Maximum cable length | 31 feet |
| Power supply | 24 VDC |
| Output signal | 4 .. 20 mA DC / 1-10 VDC, discrete relay outputs of 120 VAC, 24 VDC, dry contact |
| Maximum operating temperature | Measuring head: 320°F (160°C) Control cabinet: 122°F (50°C) |
| Components | System includes: sensor, shielded glass fiber-optic cable and control device. |

BENEFITS

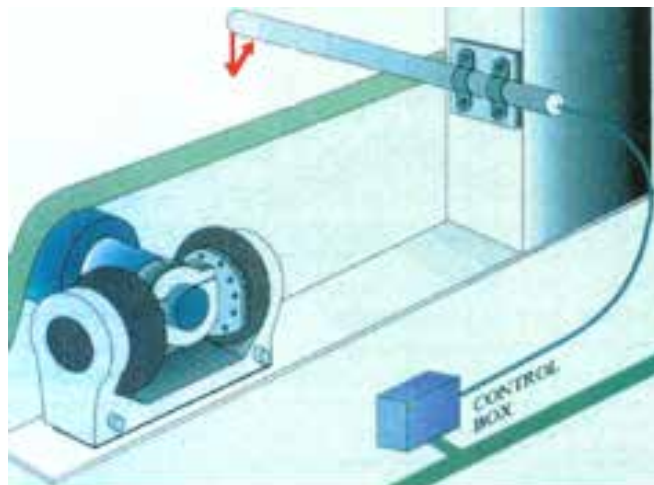
- Easy to install and use.
- Continuous and precise monitoring of web through analog output to your control room ensures no missed breaks
- Can be installed below and above felts, rolls and open draws.
- Does not require daily cleaning and maintenance.

SYSTEM COMPONENTS

The detection system consists of a measuring head and extension pipe connected by a pair of identical fibre-optic cables to an infrared amplifier housed in a Nema-4X stainless steel enclosure.

The control cabinet is located outside of the machine hood so that no electronic components reside in the heat of the machine. The measuring sensor head is clamped to the machine frame by a specially designed clamp.

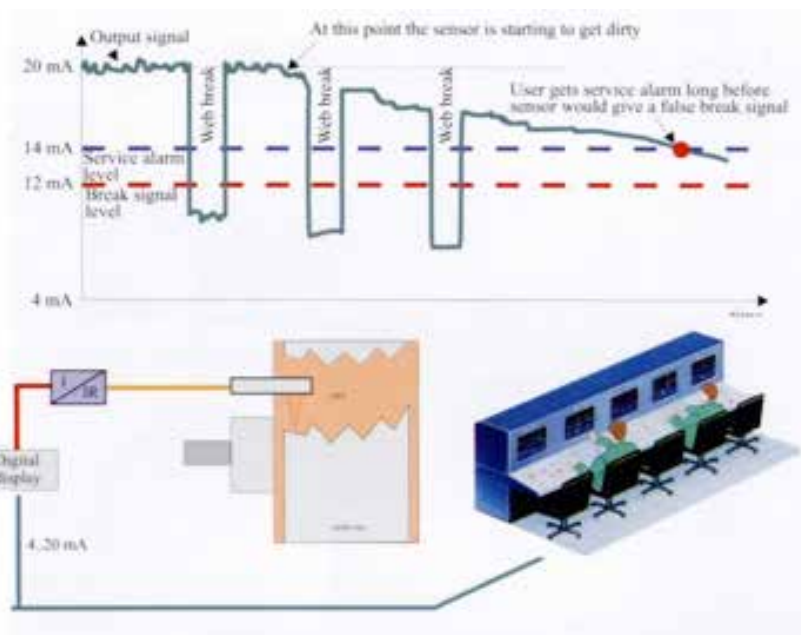
The fibre cables are protected by a 1" SS316 clad Teflon flex hose. This hose is air purged from the control cabinet to the two eyes on the sensor pipe to keep them clean. Three cable lengths are available: 10 feet, 23 feet, and 31 feet.



OPERATING PRINCIPLE

The basic principle of operation is quite simple. Light generated by the infrared amplifier is directed by one cable to the sheet surface. Due to the difference between sheet surface texture and the felt, roll surface or open air, the return light scatter from the second eye and cable determines the output. A 4.20 mA DC signal is developed proportional to the light scatter.

An isolated signal to a PLC and or DCS is supplied as well as discrete relay outputs of 120 VAC, 24 VDC or dry contact. Signal output is viewed on a local panel meter and a sensor alarm and break alarm light are also provided.



FIBER OPTIC CABLE

The two fiber-optic cables are protected by a Teflon flex hose encased in a 1" braided stainless steel sheath. The hose and two sensor eyes on the sensor head are kept clean with purge air from the control cabinet.

ESTRAC 2000 NON-CONTACT FELT GUIDE SYSTEM

www.eskopacific.com
ESTRAC 2000 DATASHEET

INFRARED EDGE TRACKING SYSTEM

APPLICATIONS

- Originally developed for pulp & paper and converting plants, these systems can be used for any device requiring edge tracking control.
- Advanced non-contact measuring and guiding for felts and fabrics, can be placed into any part of the machine.

FEATURES

- No moving or wearing parts
- No electrical components in process area
- Non-contact measurement using pulsed infrared light
- All SS construction
- Simple to install, easy to clean and maintain



SPECIFICATIONS

| MODEL | ESTRAC 200 |
|---------------------|---|
| MATERIAL | Stainless steel SS304 |
| Measurement | Modulated infrared light, frequency 5 kHz |
| Accuracy | < 1 mm |
| Output signal | 4-20 mA, pneumatic signal 8..52 psi |
| Operating voltage | 24 VDC, 100...240 VAC |
| Maximum temperature | Measuring fork: 320°F (160°C) Control box: 122°F (50°C) |

BENEFITS

- Improves run time
- Increases lifetime of fabric
- Eliminates wear and tear of edge
- Minimizes cross machine movement of fabric. Through the 4-20 mA output, the system can be adapted directly to any roll guiding system as well as to the machine control room to provide continuous information on the fabric's cross machine position.
- Requires minimal cleaning as the continuous air purge and water spray keep the fiber optic lenses clean for proper operation.
- Specifically designed for harsh industrial environments. Includes a minimal amount of components resulting in extremely low system maintenance.

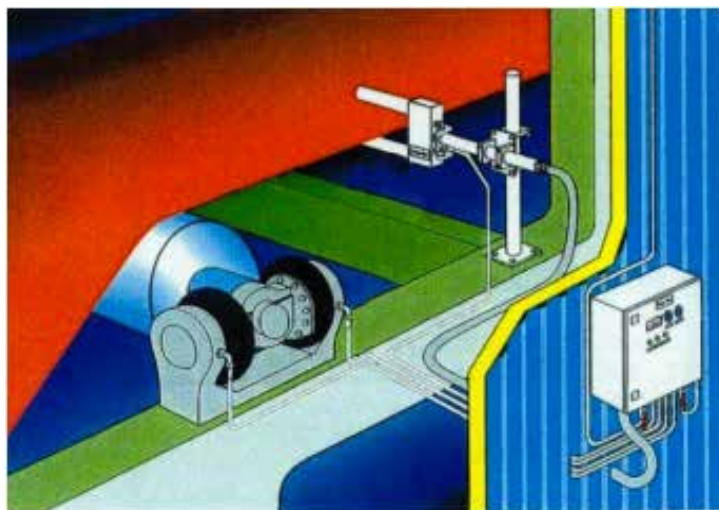
OPERATING PRINCIPLE

The ESTRAC 2000 infra-red guiding system consists of a SS316 measuring fork mounted on the machine frame and connected to a control cabinet outside of the machine hood.

A pair of protected fibre-optic cables connects the measuring fork to the control cabinet.

Control of the existing guide roll actuator is achieved through a 4-20 mA DC signal developed by the infra-red amplifier in the cabinet.

Adapting to a pneumatic, hydraulic or electrical actuator is then made quite simple.



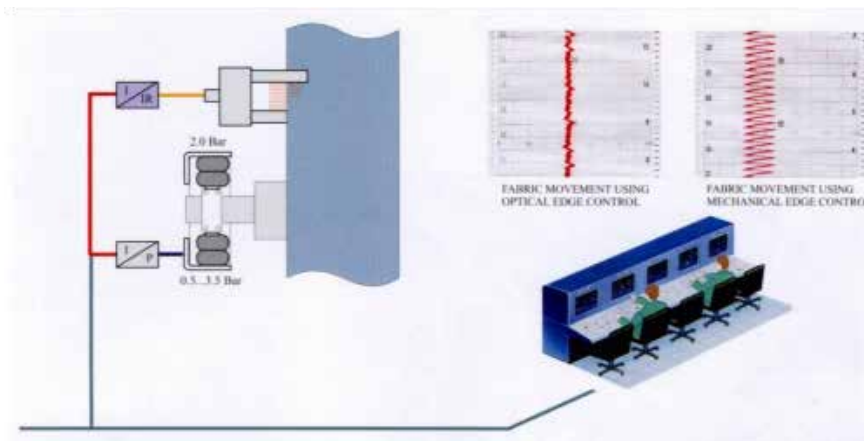
TRENDING

The fabric position may be trended on a DCS or strip chart recorder via an isolated signal.

A standard feature also allows the use of the existing pneumatic guide paddle as a backup unit.

CLEANING

Cleanliness of the fork sensors is maintained by a continuous air purge internally through the fork from the control cabinet.



FIBER OPTIC CABLE

The two fiber-optic cables are protected by a Teflon flex hose encased in a 1" braided stainless steel sheath.

MANUAL & AUTOMATIC GREASE HANDLING PRODUCTS

- STOCKING DISTRIBUTOR OF ASSALUB IN NORTH AMERICA

- FULL RANGE OF PRODUCTS:

- > DIGITAL GREASE METERS
- > PNEUMATIC 1:65 GREASE PUMP
- > LUBERIGHT MANUAL DIGITAL METER
- > LUBEMON AUTOMATED MONITORING SYSTEM

AUTOMATED SYSTEMS

PUMP CORRECT
AMOUNT INTO
BEARINGS EVERY
TIME

WELL-EMPTIED

GREASE PAILS,
KEGS & DRUMS



LEVEL & PRESSURE

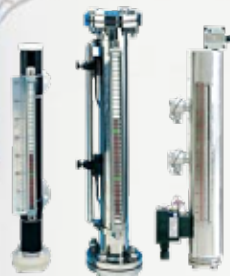
LEVEL TRANSMITTERS & PRESSURE MONITORING



- LEVEL TRANSMITTERS
FEATURING 0.1%
ACCURACY WITH
HART PROTOCOL AND
PROFIBUS PA

- SUPERIOR
INSTRUMENTATION
TECHNOLOGY

- PRESSURE AND TEMPERATURE
GAUGES WITH
MODULAR DESIGNS



Mk III DIGITAL GREASE METER

www.eskopacific.com
Mk III DATASHEET



For accurate delivery of grease according to manufacturer's recommendations.

Longer bearing life, save over 30% grease usage.

APPLICATIONS

- In line design for installation into almost any automatic system for dispensing lubricant or monitoring grease flow.

FEATURES

- Large, easy to read display with programmable universal units: cm³, grams, oz or fl oz.
- Resettable LCD counter
- Advanced oval gear technology electronic meter.

Mk III DIGITAL GREASE METER

SPECIFICATIONS

| MODEL Mk III | PART # 0102525-2 |
|-------------------------|--|
| HOUSING MATERIAL | Aluminum, anodized |
| Seal material | Neoprene rubber |
| Maximum Flow | 1,000 cm ³ / min |
| Measuring Accuracy | ± 3% up to 30 MPa (4,400 psi) |
| Working Pressure | Max 70 MPa (10,000 psi) |
| Number of digits/height | 4 digits, 9 mm display |
| Grease medium | Grease up to NLGI 2 |
| Battery | 1 piece AA (1.5 V) |
| Connections | 1/8 - 27 NPTF female |
| Weight | 0.3 kg (.7 lb) |
| Optional accessories | Pair with grease meter gun, quick couplings, swivel fittings |

ASSALUB GREASE HANDLING - Mk III GREASE METER

| DESCRIPTION | PART NUMBER |
|---|------------------|
| Mk III Grease meter | 0102525-2 |
| Ext. hose; 1/8" NPT male; 800 mm length | 0904902 |
| Ext. hose; 1/8" NPT male; 500 mm length | 0904984 |
| Grease meter with gun | 0102410-2 |
| Air gun | 902947 |
| Quick coupling (1/8" NPT female) | 906408 |
| Quick coupling (1/8" NPT male) | 906409 |
| Grease Control Valve | 0043750-3 |
| Z-swivel | 0053515 |
| L-swivel | 0053520 |
| Straight swivel | 0053525 |



GREASE METER GUN



GREASE FILTER



QUICK CONNECTORS

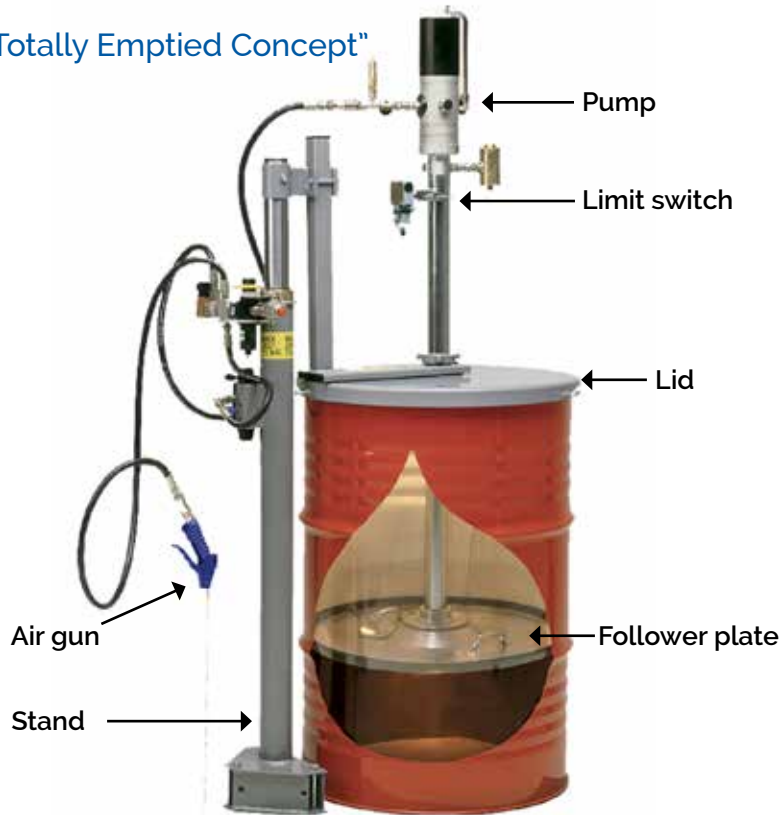


SWIVEL FITTING

PNEUMATIC 1:65 GREASE PUMP

www.eskopacific.com
1:65 GREASE PUMP DATASHEET

"The Totally Emptied Concept"



Environmentally friendly
and economic pump
system.

APPLICATIONS

- Pumping innovation with a floating follower plate designed as a completely closed grease handling system

FEATURES

- Minimal grease is wasted
- Easy to see grease level in the drum from a distance
- Waste disposal costs are reduced
- Reliable operation

PNEUMATIC 1:65 GREASE PUMP

SPECIFICATIONS

| MODEL 1:65 PUMP | PART #0102095 | PART #0102094 | PART #0102093 |
|--|---|---------------|---------------|
| MATERIALS | Anodized aluminum, tempered and stainless steel, brass and plastic | | |
| Overall height for pump and a filled drum: | | 1.8 m (71") | 2.2 m (87") |
| Size | 16-20 kg pail | 1/4 - drum | 1/1 - drum |
| Capacity approx. | 2.65 lb / min (1,200 grams/min) | | |
| Grease outlet pressure | 7,450 psi (520 bar) with 116 psi air supply | | |
| Grease outlet connection | 1/4" NPT | | |
| Grease return inlet | Plugged tube fitting (12 mm) | | |
| Air supply pressure, min-max | 43.5 - 145 psi (3-10 bar) | | |
| Air supply connection | 1/4 " NPT | | |
| Pump tube diameter | 2" (50 mm) | | |
| Optional accessories | Limit switch, limit switch holder for automatic or semi-automatic operation | | |

ASSALUB GREASE PUMP

DESCRIPTION

PART NUMBER

Grease pump kits

| | |
|--|----------|
| Kit; 1:65 grease pump; 1/4 drum lid & follower | 200048-3 |
| Kit; 1:65 grease pump; 1/1 drum lid & follower | 200049-3 |
| Kit; 1:6 grease pump; 1/1 drum lid & follower | 200069-3 |

Grease pump kit components

| | |
|---|---------|
| Grease pump; 1:65; 1/1 drum with return | 0102093 |
| Grease pump; 1:65; 1/4 drum with return | 0102094 |
| Grease pump; 1:65; 20 kg pail with return | 0102095 |
| Grease pump; 1:6; 1/4 drum with return | 0102100 |
| Grease pump; 1:6; 1/1 drum with return | 0102100 |

| | |
|---------------------------|---------|
| Lid for 20 kg pail | 0102019 |
| Lid for (180 kg) 1/1 drum | 0102110 |
| Lid for (50 kg) 1/4 drum | 0102111 |

| | |
|--------------------------------------|---------|
| Follower plate for (180 kg) 1/1 drum | 0102116 |
| Follower plate for (50 kg) 1/4 drum | 0102142 |
| Follower plate for 20 kg pail | 0102202 |

Grease pump accessories

| | |
|--|---------|
| Level switch for 1:6 & 1:65 grease pumps | 1117069 |
| Level switch holder (50 mm dia tube) | 0102206 |
| Drum bung fitting (32 mm dia) - zinc | 0102074 |
| Drum bung fitting (35 mm dia) - zinc | 0102085 |
| Drum bung fitting (50 mm dia) - zinc | 0102086 |
| Drum bung fitting (2") - steel | 0122136 |

QUICK REFERENCE PART NUMBERS FOR KITS:

| KIT FOR: | 16-20 kg pail | 1/4-drum | 1/1-drum |
|---|---------------|----------|----------|
| 1:65 Used for dual line greasing systems. | | 200048-3 | 200049-3 |
| 1:6 Available for transfer of grease between containers. | 200069-3 | | |

PUMPING INNOVATION

ASSALUB pumping innovation challenges conventional construction because the pump is supported on a floating follower plate.

This follower plate/pump construction is designed as a completely closed grease handling system to empty a grease barrel.

Only the grease remaining under the curved follower plate (about 2 kg in a 200 kg drum) is left in the barrel. The pump and follower plate fall with the grease level due to the weight and vibration caused by the pump, in combination with the vacuum that arises under the follower plate, preventing the plate from sticking in the drum.

When the drum is empty, the follower plate rests hard against the bottom of the drum and is released by means of compressed air using an airgun (included).

NOTE WHEN ORDERING:

The pail or drum size is important to ensure components fit correctly.



LID



FOLLOWER PLATE



LIMIT SWITCH



AIR GUN



Measures the flow of lubricant and ambient temperature and transmits it to a control unit.

APPLICATIONS

- Suitable for continuous monitoring of lubrication in lubricating systems.

FEATURES

- Available in Aluminum or Stainless Steel
- Connects to a CCMon Control unit or other mill systems with pulse inputs.



SPECIFICATIONS

| LUBEMON | PART # 101919-2 | PART # 101918-2 |
|------------------------|--|--|
| BODY MATERIAL | SS316 | Aluminum |
| Gear material | PEEK | POM |
| Dimensions (W x H x D) | 46 x 40 x 50 mm 1.8" x 1.6" x 2.0" | 46 x 40 x 50 mm 1.8" x 1.6" x 2.0" |
| Range | up to 75 m from control unit | up to 75 m from control unit |
| Accuracy | Grease NLGI 2: 0.655 cm ³ / pulse ±3% Oil ISO-VG 150: 0.610 cm ³ / pulse ±3 % | |
| Connection | 1/8" NPT female | 1/8" NPT female |
| Flow range | 0 - 1,500 cm ³ / min | 0 - 1,500 cm ³ / min |
| Temperature | -20° C to 80° C -4° F to 176° F | -20° C to 80° C -4° F to 176° F |
| Maximum pressure | 10,000 psi / 700 bar | 10,000 psi / 700 bar |
| Media | Grease NLGI 000 to NLGI 2 Oil ISO VG > 42 | Grease NLGI 000 to NLGI 2 Oil ISO VG > 42 |
| Protection | IP 67 | IP 67 |
| Life | 1,000,000,000 pulses (655 m ³) | |
| Weight | 0.49 kg / 1.08 lb | 0.19 kg / 0.42 lb |
| LUBEMON HV | PART # 102030-2 | PART # 102028-2 |
| Flow range | 0 - 2,500 cm ³ / min | 0 - 2,500 cm ³ / min |

ASSALUB GREASE HANDLING - LUBEMON

| DESCRIPTION | PART NUMBER |
|---------------------------------------|-------------|
| LubeMon AL (Aluminum) | 101918-2 |
| LubeMon SS (Stainless steel) | 101919-2 |
| LubeMon HV AL (Aluminum) | 102030-2 |
| LubeMon HV SS (Stainless steel) | 102028-2 |
| Elbow connector, female, 5M, w/o LED | 907134 |
| Elbow connector, female, 5M, c/w LED | 907133 |
| Elbow connector, female, 25M, w/o LED | 907134-25 |
| Elbow connector, female, 25M, c/w LED | 907133-25 |

HOW IT WORKS

The measuring unit is an accurate oval gear mechanism with a magnet integrated into one of the gears.

The body of the unit incorporates a reed switch element which senses the magnet as it passes.

Each single revolution of the oval gears has a displacement of 0.655 cm^3

There are two versions: the standard and a high volume (HV) model.



CABLE



CONNECTOR



ELBOW CONNECTOR



USB-CABLE

LUBERIGHT FOR MANUAL GREASING

DIGITAL GREASE METER FOR COMMUNICATION WITH TRANSPONDERS

www.eskopacific.com
LUBERIGHT DATASHEET



Displays how much grease is planned for the lubrication point.

APPLICATIONS

- Reduces over-lubrication and missed lubrications.

FEATURES

- Displays planned lubrication amount for each point
- Measures and records grease dispensed at each point
- Built-in transmitter to identify transponders
- Can be used on grease nipples without transponders
- Selectable metric or imperial units (cm³, gram, oz or fluid oz)



SPECIFICATIONS

LUBERIGHT PART # 0102510

COMPUTER ASSISTED MANUAL LUBRICATION SYSTEM

Grants full control over important manual lubrication.
Identifies each lubrication point and displays the correct amount of grease to use.
Confirms each lubrication point and prevents that lubrication point from getting overlooked.
Makes it possible to verify lubrication history for each lubrication point.
Planned and verified in a PC program (requires LubeRight.NET program license).

| | |
|---------------------------------|---|
| Maximum working pressure | 10,000 psi / 70 MPa |
| Output range | 0 - 1,000 cm ³ / min |
| Temperature range | -20° C to +40° C -4° F to 104° F |
| Connections | ISO - G 1/8 female |
| Options to complete your system | Grease nipple with transponder, grease nipple with transponder with button head nipple, digital grease meter with transmitter for communication with transponders, USB-cable, parts for an extended nipple system, number labels, mounting tool for transponders. LubeRight.NET program license is necessary. |
| Available as a full kit | LubeRight Mk II full kit (with grease meter, USB-cable, case, number labels and mounting tool for transponders) |

ASSALUB GREASE HANDLING PRODUCTS - LUBERIGHT

| DESCRIPTION | PART NUMBER |
|---|-------------|
| LubeRight kits | |
| LubeRight Mk II full kit | 0102533 |
| Luberight Mk II full kit for button head nipples | 0102533-3 |
| LubeRight grease meter | |
| Digital grease meter with transmitter for communication with transponders | 0102510 |
| Digital grease meter with transmitter for communication with transponders with button head nipple | 0102510-3 |

COMPLETE YOUR SYSTEM WITH COMPONENTS

This product is typically utilized in a system that consists of: a reader, a grease nipple with transponder for each greasing point to be tracked, a USB cable to connect the grease meter to your PC, and the LubeRight.NET program license (necessary) to track and report on your activity.



The transponder is the lubrication point identity tag. It is mounted on a nipple by a support washer and a retaining ring (right).



Transponder is made of glass fiber-laminated epoxy.

FULL KIT OPTIONS



PART # 0102533

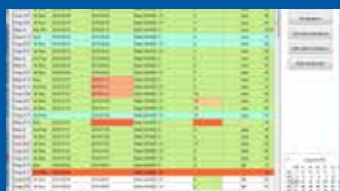
With digital grease meter with transmitter for communicating with transponders.

Kit also includes:
USB-cable
Case
Number labels (1-540)
Mounting tool for transponders

PART # 0102533-3

With digital grease meter for communicating with transponders with button head nipple.

Kit also includes:
USB-cable
Case
Number labels (1-540)
Mounting tool for transponders



LubeRight.NET PROGRAM License



USB - CABLE



GREASE NIPPLE



BUTTON HEAD GREASE NIPPLE

Esko Pacific Sales Ltd.

PRODUCT WARRANTY AND RETURNS

Original proof of purchase and delivery and written notification within the warranty period are required for all warranty claims. ESKO reserves the right to apply reasonable service charges for equipment deemed to be returned without proper justification.

This warranty applies only to the original purchase of ESKO products from ESKO directly or through an authorized ESKO distributor and is not assignable. Equipment manufactured by other vendors carries the vendor's or manufacturer's standard warranty.

LIMITATIONS

This warranty is limited to the above and does not apply to defects resulting from any Customer actions or inactions such as normal wear and tear in industrial operating conditions, abnormal operating conditions, inadequate maintenance, improper use or installation, operation outside of technical specifications, improper repair or modifications not expressly approved by ESKO. No other warranties are expressed or implied. ESKO specifically disclaims any implied warranties of merchantability or fitness for a specific purpose. ESKO's liability shall be limited to the actual purchase price of any defective unit or units of equipment to which a claim is made, and shall in no event include the Customer's manufacturing costs, lost profits or goodwill, or any other direct, indirect, special, incidental or consequential damages whether based on contract, tort or other legal theory. ESKO shall not be liable for manufacturing defects or customary variances from specifications that are within industry norms.

SPECIAL CONDITIONS

In the event that the Customer purchases or uses any ESKO products for an unintended use (such as applications intended to sustain or support life, in nuclear facilities, or any other application where the failure of the product could create a situation where catastrophic property damage, personal injury or death may occur), the Customer shall indemnify and hold harmless ESKO and its officers, directors, employees, agents, affiliates, successors and assigns against all claims, costs, damages and expenses arising out of or in connection with, directly or indirectly, any claim for property damage, personal injury or death associated with such unintended or unauthorized use, even if such claim alleges that ESKO was negligent regarding the design and manufacturing of the subject product.

This information was last updated October 2017

A scenic landscape of a forested mountain range. In the foreground, there's a calm lake with a small white boat. The middle ground is filled with dense green forests covering the slopes of the mountains. In the background, more rugged mountain peaks are visible under a blue sky with scattered white clouds.

www.eskopacific.com

1-800-665-3756

ESKO is headquartered in the Pacific Northwest. Our technical services, manufacturing and assembly, sales and corporate operations are based in Vancouver, B.C. Our cover photo showcases the densely forested and rugged West Coast.

SERVING THE NEEDS OF PROCESS INDUSTRIES FOR OVER 35 YEARS