



Ratio 1:6 pumps

Suitable for transfer of grease from a drum to a pail, keg or mobile greasing unit.

Ratio 1:65 pumps

Recommended for long distance pumping of grease, e.g. shop store pump room to the work places via a tubing system, hose reels and end-of-line delivery valves. Also suitable for mobile greasing units.

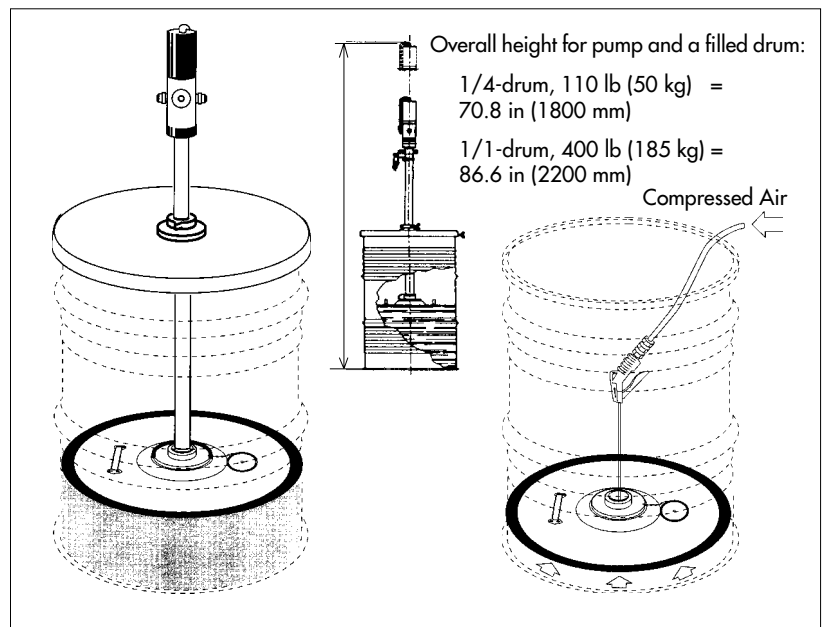
Environmentally Friendly Air Operated Grease Pump

Our environmentally friendly pump concept makes it possible to empty a drum almost completely.

With a conventional grease pump and follower plate it is normal for 10-30 lb (5-15 kg) of grease to be left (wasted) in the drum because of the pump design.

Our drum mounted grease pump rides on top of the follower plate. The pump descends as the grease level falls in the drum. The weight of the pump and the vacuum that arises under the follower plate prevent the plate from sticking. When the drum is empty the follower plate rests hard against the bottom of the drum and must be released by means of compressed air.

- Save grease and money — pump with follower plate empties almost the whole barrel
- Environmentally clean and easy to use
- Easy to see grease level in drum at a distance — built-in level indicator as pump rides on the follower plate



AIR-OPERATED TRANSFER PUMP

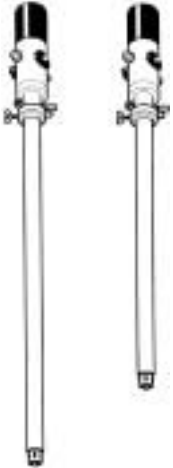


for grease, **Ratio 1:6**, with 2" drum bung fitting for drum lid mounting. 400 lb (180 kg)

Capacity: Approx. 24 lb/min (11 kg/min)
 Air pressure min-max: 45-145 psi (0.3 - 1.0 MPa)
 Grease pressure: 700 psi @ 115 psi air pressure (4.8 MPa at 0.8 MPa)
 Grease connection: 3/4" NPT female
 Air connection: 1/4" NPT female
 Pump tube dim.: Ø 2 in (50 mm)
 Materials: Anodized aluminum, steel, stainless steel, brass and plastic
 Sealings: Nitrile rubber

For 1/1-drum 400 lb (180 kg)
 Height: 57 in (1440 mm)
 Pump tube: L = 37.8 in (960 mm)
 Weight: 21.5 lb (9.8 kg)
Art No: 0102100

AIR-OPERATED GREASE PUMP



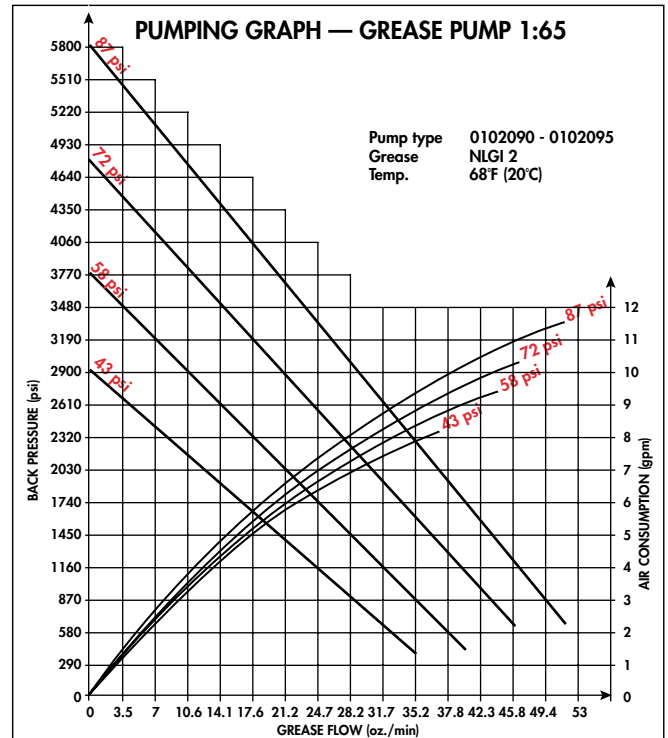
Ratio 1:65, with drum bung fitting for lid mounting. The pump is equipped with a built-in return grease pipe and suitable for use with automatic centralized dual-line lubrication systems which are common in e.g. paper, pulp, steel and cement mills, mines and power stations. The grease pump can be equipped with a special follower plate for complete emptying.

Capacity: Approx. 2.6 lb/min (1200 g/min)
 Air pressure, min-max: 45-145 psi (0.3 - 1.0 MPa)
 Grease pressure: 7540 psi @ 115 psi air pressure (52 MPa at 0.8 MPa)
 Grease supply outlet: 1/4" NPT female
 Grease return inlet: Plugged tube fitting for Ø 1/2" (12 mm)
 Air connection: 1/4" NPT female
 Pump tube: Ø 2 in (50 mm)
 Materials: Anodized aluminium, tempered and stainless steel, brass and plastic.
 Sealings: Nitrile rubber

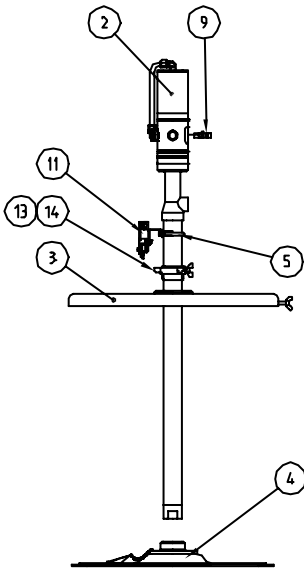
For 5 gal pail (50 lb) (20 kg)
 Height: 32 in (800 mm)
 Pump tube: L = 16 in (400 mm)
 Weight: 19 lb (9.0 kg)
Art No: 0102095

For 1/4-drum 110 lb (50 kg)
 Height, total: 44 in (800 mm)
 Pump tube: L = 28 in (700 mm)
 Weight: 25 lb (11.5 kg)
Art. No: 0102094

For 1/1-drum 400 lb (180 kg)
 Height, total: 51 in (1305 mm)
 Pump tube: L = 35 in (890 mm)
 Weight: 29 lb (13.0 kg)
Art No: 0102093



1:6 GREASE TRANSFER PUMP (400 lb drum type / 180 kg)



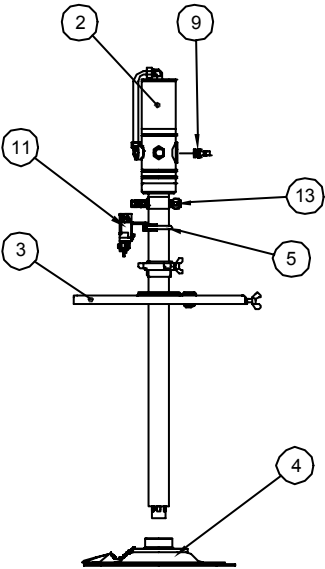
PUMP EQUIPMENT 1:6 1/1-DRUM

14	1	0230723	Screw	
13	1	0122136	Drum bung fitting	
11	1	1117069	Optional: Limit switch	
9	1		R to 1/4" NPT female Adapter	1/4 "
5	1	0102206	Optional: Limit switch holder	
4	1	0102116	Follower plate 21.8-22.8 inch dia. (555-580 mm)	1/1-drum
3	1	0102110	Drum lid 21.0-23.8 inch dia. (535-605 mm)	1/1-drum
2	1	0102100	Pump 1:6	1/1-drum
		200069	Grease Pump Assembly (items 2, 3, 4, 9, 13)	
			Optional Limit Switch w/holder (items 5, 11)	

1:65 GREASE PUMP (5 gal pail type / 50 lb / 20 kg)

PUMP EQUIPMENT 1:65 5 gal (20 kg) pail

13	1	3201113	Plug	
11	1	1117069	Optional Limit switch	
9	1		R to NPT female adapter	1/4"
5	1	0102206	Optional Limit switch holder	
4	1	0102202	Follower plate 10.8-11.4 inch dia. (275-290 mm)	16-20 kg pail
3	1	0102019	Drum lid 9.8-12.6 inch dia. (250-320 mm)	16-20 kg pail
2	1	0102095	Grease pump 1:65	16-20 kg pail
		2000100	Grease Pump Assembly (items 2, 3, 4, 9, 13)	
			Optional Limit Switch w/holder (items 5, 11)	



(110 lb keg type / 50 kg)

PUMP EQUIPMENT 1:65 1/4-DRUM with return connection

13	1	3201113	Plug	
11	1	1117069	Optional Limit switch	
9	1	0905068	R to NPT female Adapter	1/4"
5	1	0102206	Optional Limit switch holder	
4	1	0102142	Follower plate 13.4-14.15 inch dia. (340-360 mm)	1/4-drum
3	1	0102111	Drum lid 13.8-16.5 inch dia. (350-420 mm)	1/4-drum
2	1	0102094	Grease pump 1:65	1/4-drum
		200048	Grease Pump Assembly (items 2, 3, 4, 9, 13)	
			Optional Limit Switch w/holder (items 5, 11)	

(400 lb drum type / 180 kg)

PUMP EQUIPMENT 1:65 1/1-DRUM with return connection

13	1	3201113	Plug	
11	1	1117069	Optional: Limit switch	
9	1		R to NPT female Adapter	1/4 "
5	1	0102206	Optional: Limit switch holder	
4	1	0102116	Follower plate 21.8-22.8 inch dia. (555-580 mm)	1/1-drum
3	1	0102110	Drum lid 21.0-23.8 inch dia. (535-605 mm)	1/1-drum
2	1	0102093	Grease pump 1:65	1/1-drum
		200049	Grease Pump Assembly (items 2, 3, 4, 9, 13)	
			Optional Limit Switch w/holder (items 5, 11)	

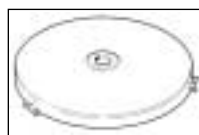
MOBILE GREASING UNIT



for 50 lb (20 kg) pail with 1:65 ratio pump.

Height: 40-1/2 in (1030 mm)
 Weight, less pail: 44 lb (20 kg)
 Other data: See Grease pump 1:65
Art. No: 0102120

DRUM LID



with 2" hub thread. Made of enameled steel sheet.

For 5 gal pail 50 lb / (20 kg)
 Dia. range: Ø 9.8-12.6 in (250 - 320 mm)
 Weight: 3.75 lb (1.7 kg)
Art. No: 0102019

For 1/4-drum 110 lb (50 kg)
 Dia. range: Ø 13.8-16.5 in (350 - 420 mm)
 Weight: 5 lb (2.4 kg)
Art. No: 0102111

For 1/1-drum 400 lb (180 kg)
 Dia. range: Ø 21.1-23.8 in (535 - 605 mm)
 Weight: 13 lb (6.0 kg)
Art. No: 0102110

FOLLOWER PLATE



The pump is fitted on top of the follower plate hub and follows it down as the grease level sinks. This makes for almost complete emptying of the drum. The pump height above the lid shows the actual grease level at a glance. Made of aluminum and with nitrile rubber seals.

For 5 gal pail 50 lb (20 kg)
 Dia. range: Ø 10.8-11.4 in (275-290 mm)
 Weight: 1.9 lb (0.85 kg)
Art. No: 0102202

For 1/4-drum 110 lb (50 kg)
 Dia. range: Ø 13.4-14.1 in (340-360 mm)
 Weight: 2.4 lb (1.1 kg)
Art. No: 0102142

For 1/1-drum 400 lb (180 kg)
 Dia. range: Ø 21.8-22.8 in (550-580 mm)
 Weight: 6.2 lb (2.8 kg)
Art. No: 0102116

OPTIONS

- LIMIT SWITCH for ratio 1:6 and 1:65 grease pumps, for mounting on to the pump tube.
- AIR GUN for releasing and lifting up the follower plate.
- DRUM TROLLEY for transportation of grease drum.
- DRUM CRADLE for transportation of grease drum.
- DRUM DOLLIES for transportation of grease drum.

Pump Type	5 gal/ (20 kg) Pail	100 lb (50 kg) 1/4 - drum	400 lb (180 kg) 1/1 - drum
1:65 with grease return	0102095	0102094	0102093
1:6 transfer pump	—	—	0102100
Drum Lid	0102019	0102111	0102110
Follower Plate	0102202	0102142	0102116



GRPUMP 0401

North American Distributor:

ESKO INDUSTRIES LIMITED

Canada: PO Box 86849, North Vancouver, BC V7L 4L3

USA: PO Box 5547, Bellingham WA 98227-5547

Fax: 604-984-6562 • Toll Free: 1-800-665-3756

Email: info@eskoindustries.com • Web: www.eskoindustries.com